

SpringSource dm Server™ User Guide

Rob Harrop
Paul Kuzan
Sam Brannen
Damilola Senbanjo
Paul Harris
Christopher Frost
Ben Hale



1.0.2.RELEASE

Copyright © SpringSource Inc., 2009

Table of Contents

1. Installing	1
1.1. Prerequisites	1
1.2. Installing from the ZIP Download	1
Downloading the ZIP file	1
Installing	1
Linux	1
Microsoft Windows	1
1.3. Post-installation steps	1
Set environment variable variables	2
JAVA_HOME	2
SERVER_HOME	2
2. Start and Stop SpringSource dm Server	5
2.1. Start	5
Linux	5
Microsoft Windows	5
2.2. Clean Start	5
Linux	6
Microsoft Windows	6
2.3. Start in debug mode	6
Linux	6
Microsoft Windows	7
2.4. Start with JMX Access Modifications	7
Linux	8
Microsoft Windows	11
2.5. Start with custom configuration directory	15
Linux	16
Windows	16
2.6. Stop	16
Linux	16
Microsoft Windows	16
3. The Web based Administration Console	18
3.1. Authentication with the Admin Console	18
3.2. The sections of the Admin Console	18
4. Provisioning Repository	21
4.1. Introduction	21
4.2. Repository Structure	21
4.3. Installing Bundles	22
4.4. Installing Libraries	22
4.5. Finding Bundles in the SpringSource Enterprise Bundle Repository	23
4.6. Configuring the repository	23

5. Serviceability	24
5.1. Log Files	24
5.2. Trace	24
Application Output	24
Per-application trace	24
System.out and System.err	25
Roll-over of trace files	25
5.3. Service Dumps	25
6. Working with Applications	27
6.1. Deploying Artifact	27
Hot Deploy	27
Manually Deploy	27
What Happens When You Deploy	28
Deployment Ordering	28
Restrictions	28
6.2. Undeploying an Artifact	29
Hot Undeploy	29
Manually Undeploy	29
7. Configuring the SpringSource dm Server	31
7.1. Configuring Serviceability	31
Configuring tracing	31
Configuring logging	31
Configuring dump files	31
7.2. Configuring the Embedded Tomcat Servlet Container	32
Servlet Container Configuration	34
Connector Configuration	36
Load Balancing Configuration	37
Cluster Configuration	37
Tomcat Configuration Files	37
7.3. Configuring Equinox	37
Configuring the telnet console	37
7.4. Configuring Deployment	38
Configuring the Deployment Timeout	38
7.5. Configuring the Provisioning Repository	38
Search Paths	38
Wildcards	38
System properties	39
Example configurations	39
Replace bundles/usr with an Ivy cache	39
Replace bundles/usr with a Maven local repository	39
8. Known Issues	40
8.1. Timeout During Startup Due to Firewall Settings	40
8.2. OutOfMemoryError: PermGen space running on Sun VM	40
9. Log Error Codes	41
9.1. Log Codes	41

Subsystem Codes	41
Error Number	41
Event Severity	41
9.2. Detailed Log Codes	42
Concurrent Log Codes	42
Control Log Codes	42
Config Log Codes	44
Deployer Log Codes	52
FFDC Log Codes	71
Bootstrap Log Codes	72
Kernel Log Codes	72
OSGi Log Codes	73
Profile Log Codes	74
Servlet Log Codes	76
Web Log Codes	78
10. Further Reading	80

1. Installing

1.1 Prerequisites

The SpringSource dm Server requires Java SE 5 or later to be installed. Java is available from [Sun](#) and elsewhere.

1.2 Installing from the ZIP Download

Downloading the ZIP file

SpringSource dm Server is distributed as a ZIP file. This can be downloaded from [here](#). Follow the instructions to obtain a username and password.

Installing

Linux

To install the SpringSource dm Server on Linux, unzip the distribution package to the desired installation directory. For example, to install into `/opt`:

```
unzip springsource-dm-server-1.0.2.RELEASE.zip -d /opt
```

This creates a directory called `springsource-dm-server-1.0.2.RELEASE` under `/opt`.

SpringSource dm Server requires write access to the installation directory, in this case `/opt/springsource-dm-server-1.0.2.RELEASE`. Typically this means it must be run as the user that installed it, or the installation directory's ownership must be changed.

Microsoft Windows

To install the SpringSource dm Server on Windows, unzip the distribution package to the desired installation directory. You should use a zip application such as 7zip, not the built-in folder decompression. Note that both Windows and Java 5 have some issues with long file names and file paths, so we recommend installing to the root directory of your chosen drive.

1.3 Post-installation steps

Set environment variable variables

JAVA_HOME

The SpringSource dm Server uses the `JAVA_HOME` environment variable to locate the `java` executable. This environment variable must be configured to point to the home of a Java 5 or Java 6 installation.

SERVER_HOME

As a convenience it is recommended to create an environment variable that points to the SpringSource dm Server installation directory. Note that the SpringSource dm Server does not require that such an environment variable has been set. This variable may have any name of your choosing. The SpringSource dm Server's documentation assumes that the variable is named `SERVER_HOME`.

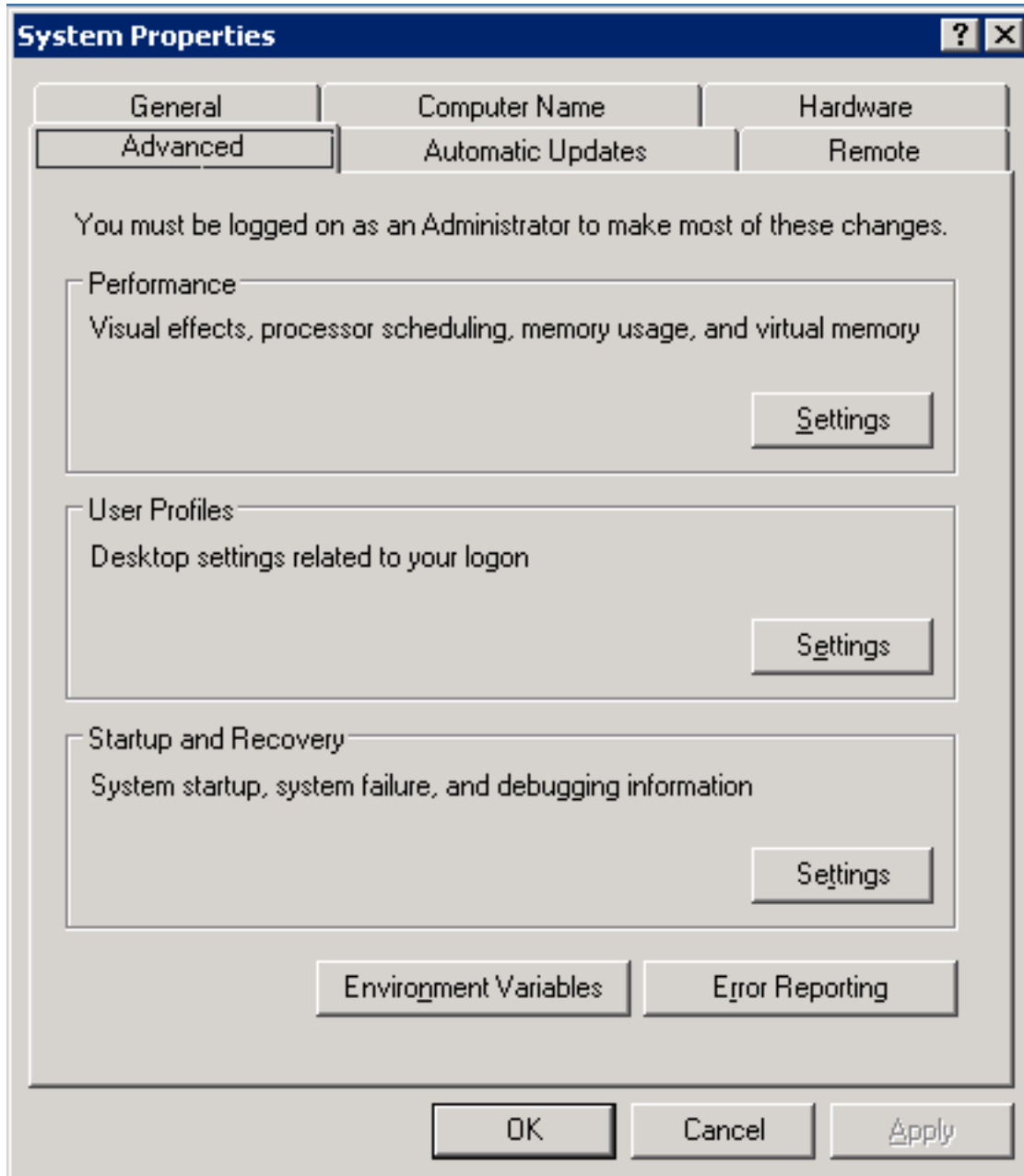
Linux

Edit the `.profile` file in your home directory to add the `SERVER_HOME` environment variable. For example, if you installed into `/opt`:

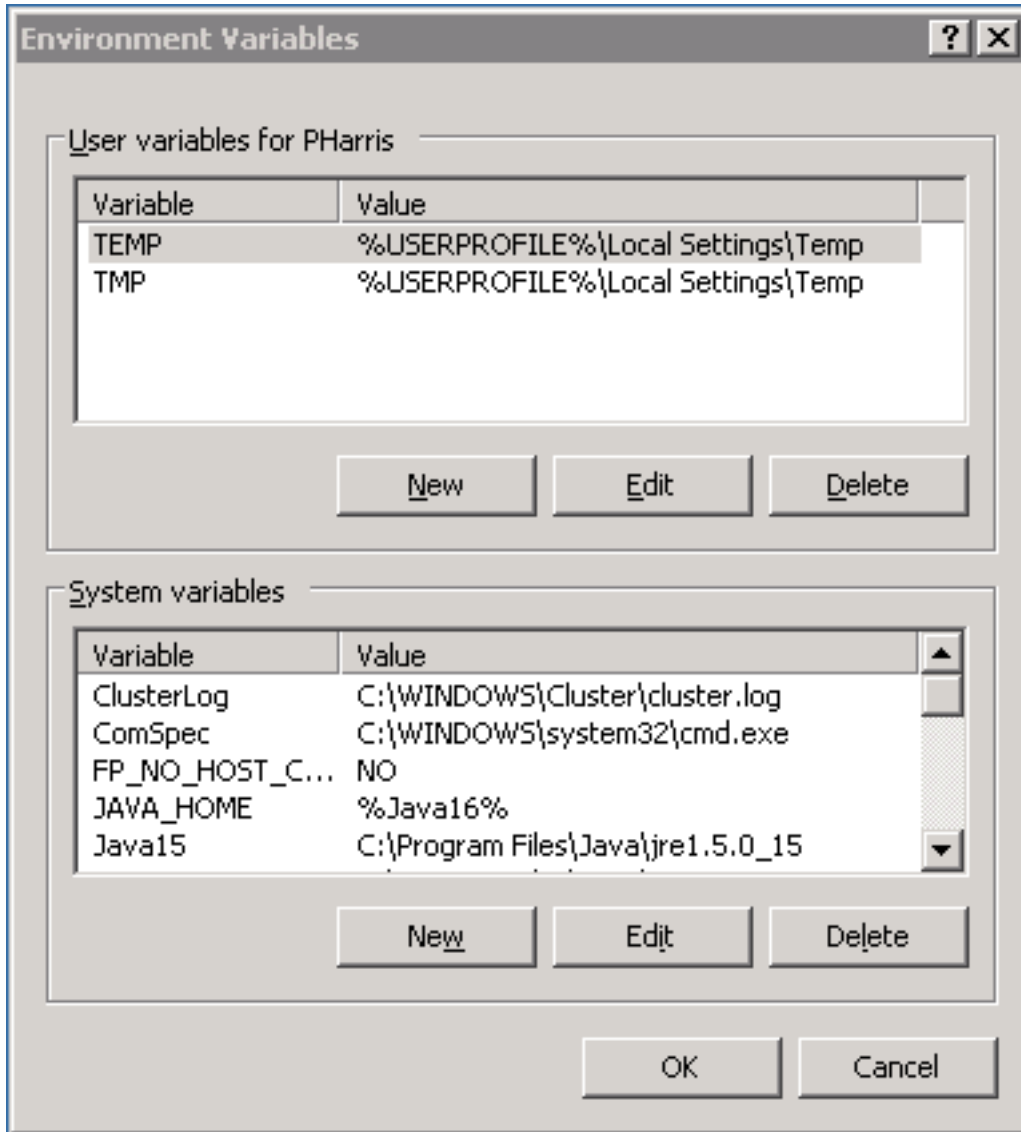
```
export SERVER_HOME=/opt/springsource-dm-server-1.0.2.RELEASE/
```

Microsoft Windows

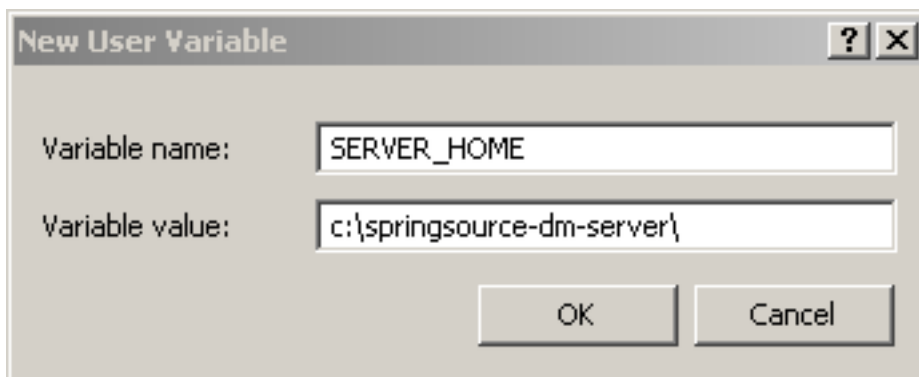
From the Start menu, open the Control Panel and double-click on 'System'.



Click the 'Advanced' tab and select 'Environment Variables'. Next, click the 'Edit' button in the 'System Variables' section.



This will display the 'Edit System Variable' window. Enter `SERVER_HOME` as the 'Variable name' and the installation directory as the 'Variable value'. Click OK.



2. Start and Stop SpringSource dm Server

2.1 Start

To start SpringSource dm Server run the startup script for your platform.

Linux

To start SpringSource dm Server run `startup.sh`:

```
cd $SERVER_HOME  
bin/startup.sh
```

Once SpringSource dm Server has started, the console will display a log message similar to the one shown below:

```
ingOsgiExtenderThread-38 <SPPM0002I> Server open for business with profile 'web'.
```

Microsoft Windows

To start SpringSource dm Server run `startup.bat`:

```
(Open a command line)  
cd %SERVER_HOME%  
bin\startup.bat
```

Once SpringSource dm Server has started console will display a log message similar to the one shown below:

```
ingOsgiExtenderThread-38 <SPPM0002I> Server open for business with profile 'web'.
```

2.2 Clean Start

To clean start SpringSource dm Server run the startup script for your platform. Clean starting removes the `SERVER_HOME/work` directory (and hence all) running applications, and all trace, log and dump files. It leaves the `SERVER_HOME/repository` and `SERVER_HOME/pickup` directories untouched, so any applications previously hot deployed will be reinstalled.

Linux

To start SpringSource dm Server run `startup.sh -clean`:

```
cd $SERVER_HOME
bin/startup.sh -clean
```

Once SpringSource dm Server has started, the console will display a log message similar to the one shown below:

```
ingOsgiExtenderThread-38 <SPPM0002I> Server open for business with profile 'web'.
```

Microsoft Windows

To start SpringSource dm Server run `startup.bat -clean`:

```
(Open a command line)
cd %SERVER_HOME%
bin\startup.bat -clean
```

Once SpringSource dm Server has started console will display a log message similar to the one shown below:

```
ingOsgiExtenderThread-38 <SPPM0002I> Server open for business with profile 'web'.
```

2.3 Start in debug mode

Linux

To start SpringSource dm Server in debug mode, run `startup.sh` passing in the `-debug` argument:

```
cd $SERVER_HOME
bin/startup.sh -debug
```

This will start the debug agent listening on port 8000 which is the default remote debug port used by Eclipse. To start in debug mode with a specific port number, pass this in as the value for the `-debug` argument:

```
cd $SERVER_HOME
bin/startup.sh -debug 8001
```

This will start the debug agent listening on port 8001. To start in debug mode and suspend the VM until a debugger attaches, pass in the `-suspend` argument along with the `-debug` argument:

```
cd $SERVER_HOME
bin/startup.sh -debug -suspend
```

This starts the debug agent, but prevents SpringSource dm Server from starting until a debugger attaches to the agent. This can be useful when trying to diagnose problems that occur during startup.

Microsoft Windows

To start SpringSource dm Server in debug mode, run `startup.bat` passing in the `-debug` argument:

```
cd %SERVER_HOME%
bin\startup.bat -debug
```

This will start the debug agent listening on port 8000 which is the default remote debug port used by Eclipse. To start in debug mode with a specific port number, pass this in as the value for the `-debug` argument:

```
cd %SERVER_HOME%
bin\startup.bat -debug 8001
```

This will start the debug agent listening on port 8001. To start in debug mode and suspend the VM until a debugger attaches, pass in the `-suspend` argument along with the `-debug` argument:

```
cd %SERVER_HOME%
bin\startup.bat -debug -suspend
```

This starts the debug agent, but prevents SpringSource dm Server from starting until a debugger attaches to the agent. This can be useful when trying to diagnose problems that occur during startup.

2.4 Start with JMX Access Modifications

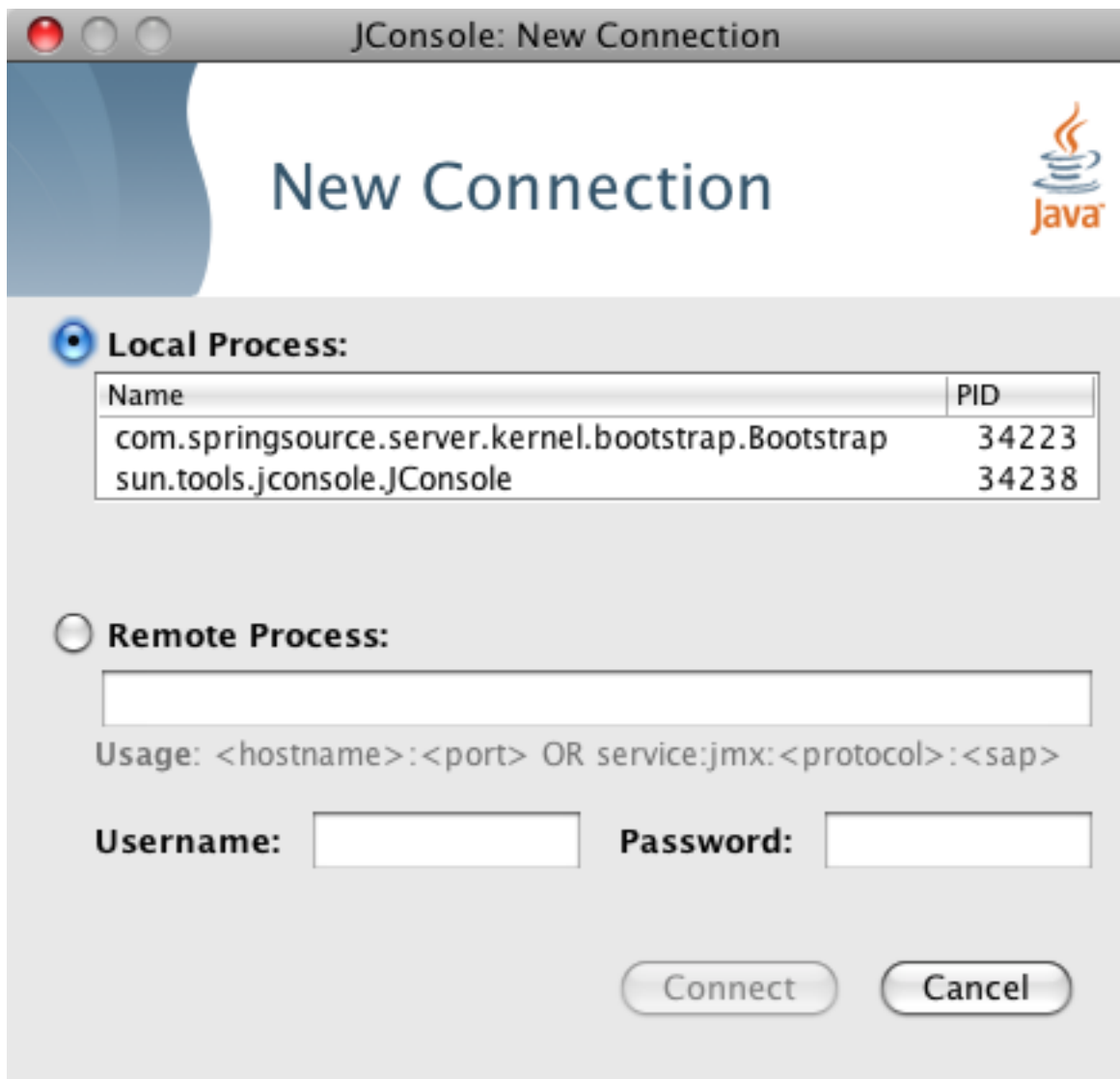
The SpringSource dm Server always starts with JMX access enabled, allowing a management tool such as JConsole to be attached. By default both local attach access and remote access over SSL with username and password authentication are provided.

Linux

To start SpringSource dm Server with default JMX access enabled, run `startup.sh` passing in no arguments:

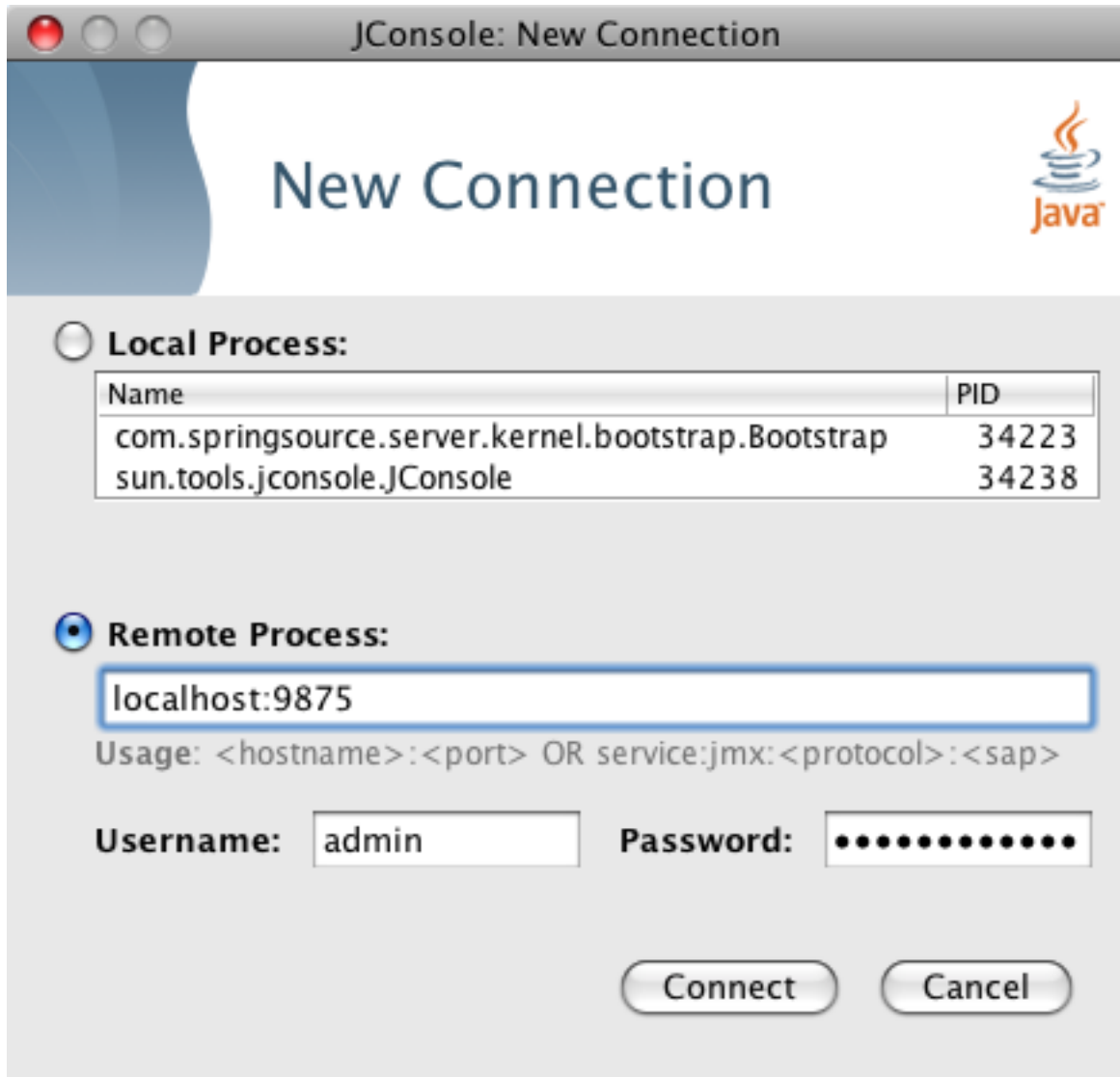
```
cd $SERVER_HOME
bin/startup.sh
```

This will start the SpringSource dm Server with JMX enabled for local attach. This allows for JConsole to be attached using the local connection option.



This will also start the SpringSource dm Server with JMX enabled for remote attach over SSL with username and password authentication. This allows for JConsole to be attached using the remote

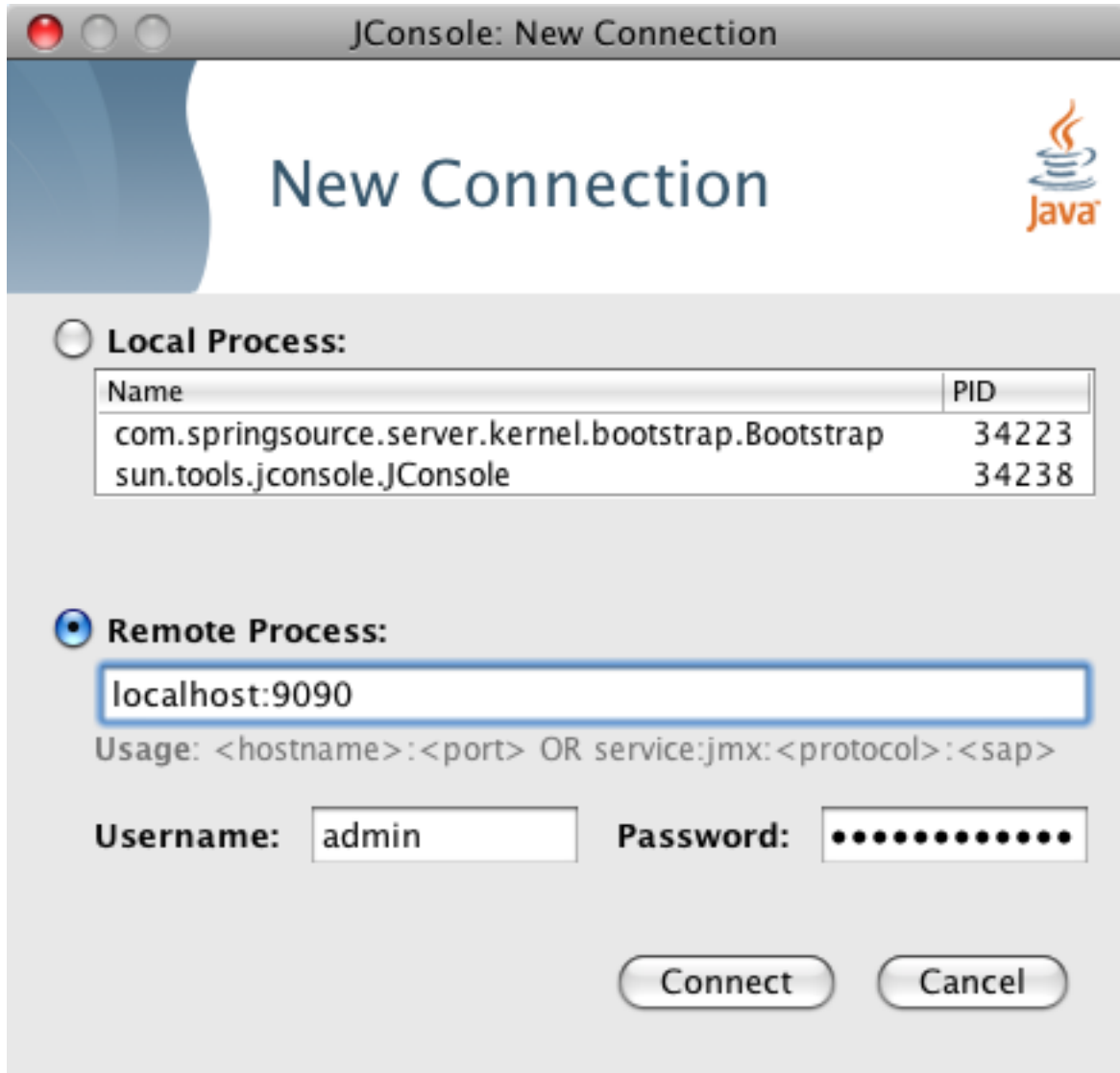
connection option on port 9875 with a default username and password of admin and springsource.



To start with the JMX remote access on a specific port number, pass this port number in as the value for the `-jmxport` argument:

```
cd $SERVER_HOME
bin/startup.sh -jmxport 9009
```

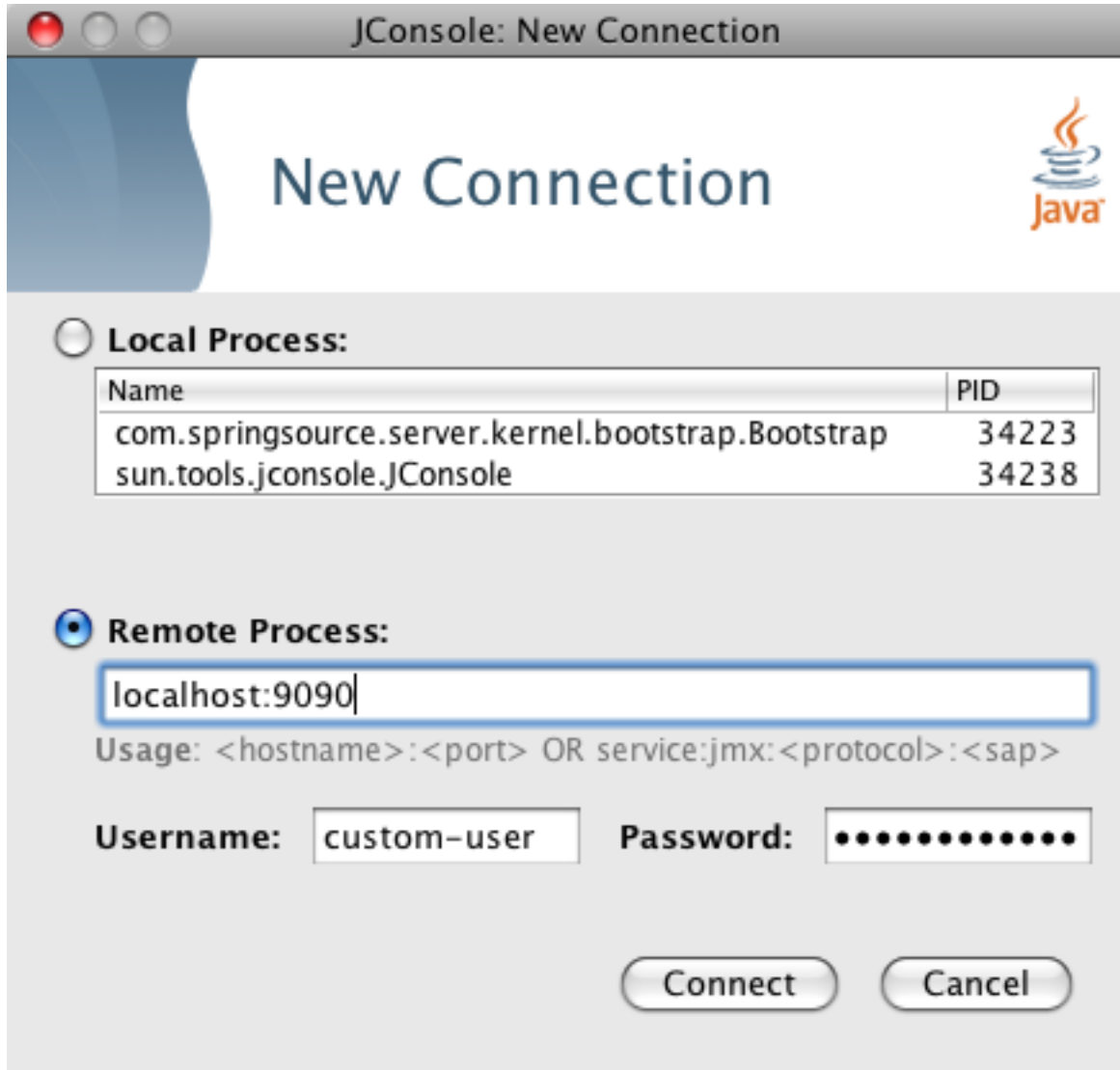
This will start the SpringSource dm Server with JMX enabled for remote attach on port 9009.



To start the JMX remote access using a custom username and password edit the file located at `$$SERVER_HOME/control/jmx-users.properties`. If you wish to use a different file for authentication, pass this filename in as the value for the `-jmxusers` argument:

```
cd $$SERVER_HOME
bin/startup.sh -jmxusers custom-jmx-users.properties
```

This will start the SpringSource dm Server with JMX enabled for remote attach using authentication credentials from `custom-jmx-users.properties`.



To start the JMX remote access using a custom SSL certificate edit the file located at `$SERVER_HOME/control/keystore`. If you wish to use a different keystore, pass this filename in as the value for the `-keystore` argument and the keystore password in as the value for the `-keystorePassword` argument:

```
cd $SERVER_HOME
bin/startup.sh -keystore customKeystore -keystorePassword customKeystorePassword
```

This will start the SpringSource dm Server with JMX enabled for remote attach using an SSL certificate from `customKeystore` with a password of `customKeystorePassword`.

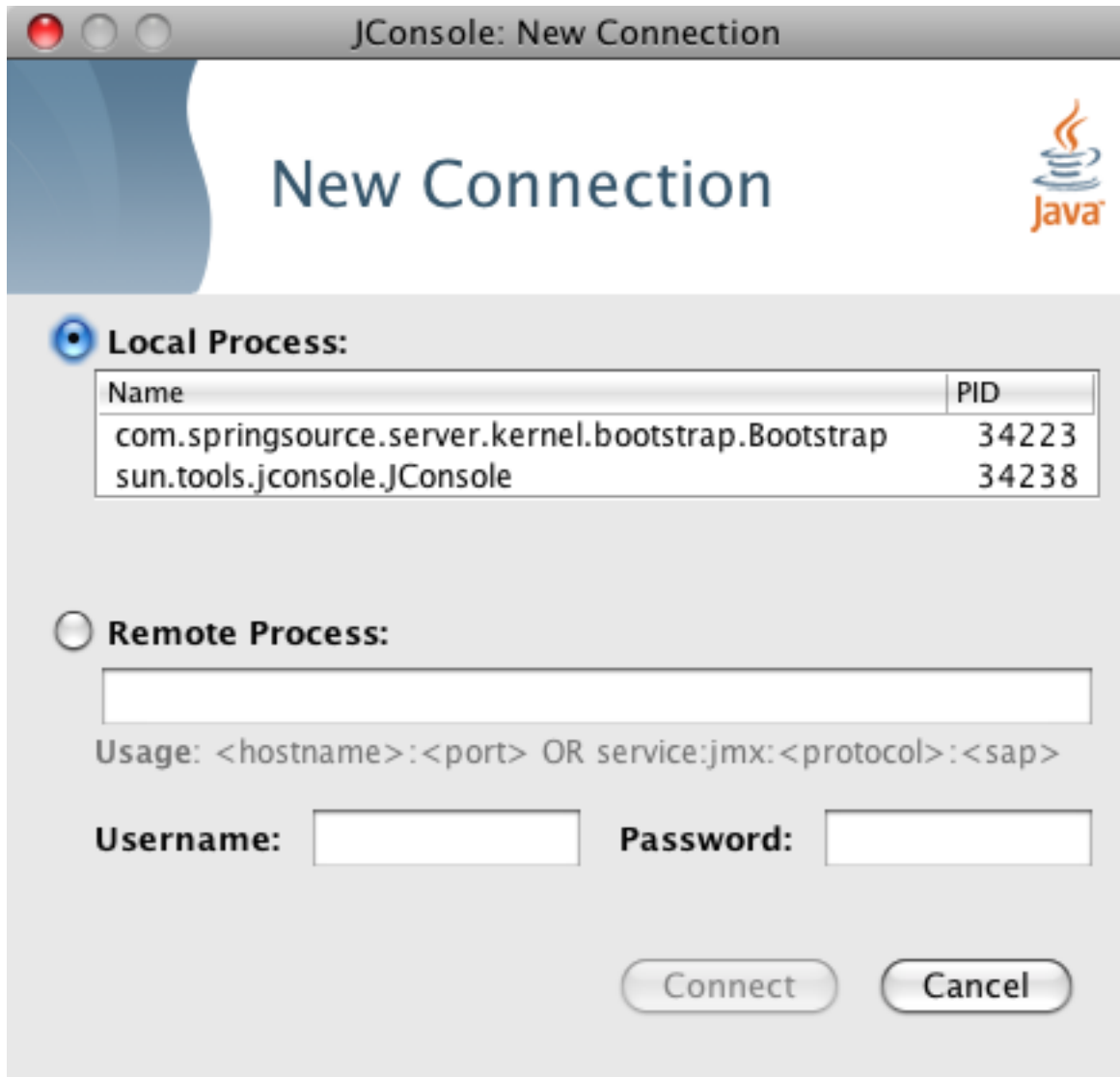
Microsoft Windows

To start SpringSource dm Server with default JMX access enabled, run `startup.sh` passing in no

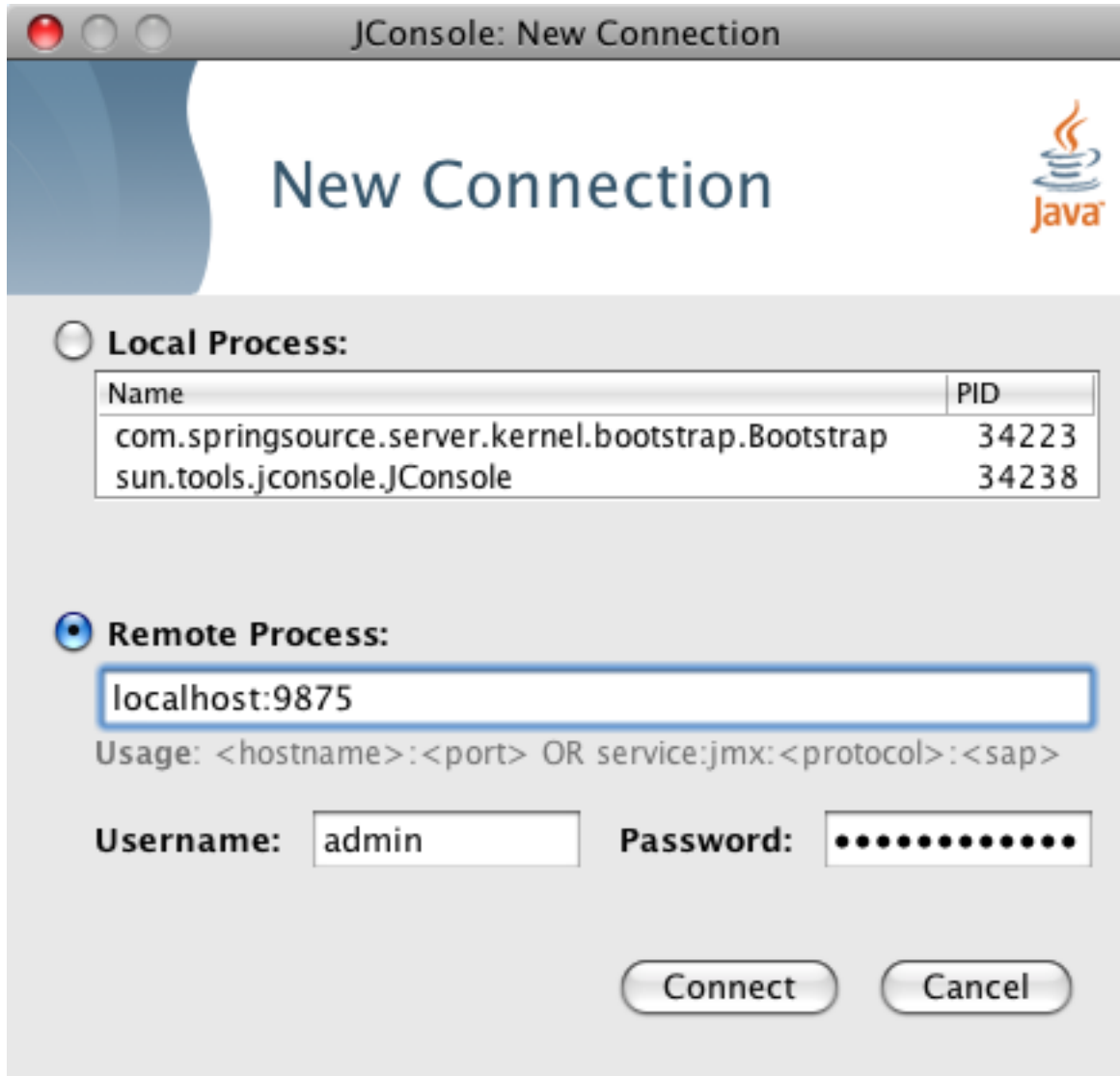
arguments:

```
cd %SERVER_HOME%  
bin\startup.sh
```

This will start the SpringSource dm Server with JMX enabled for local attach. This allows for JConsole to be attached using the local connection option.



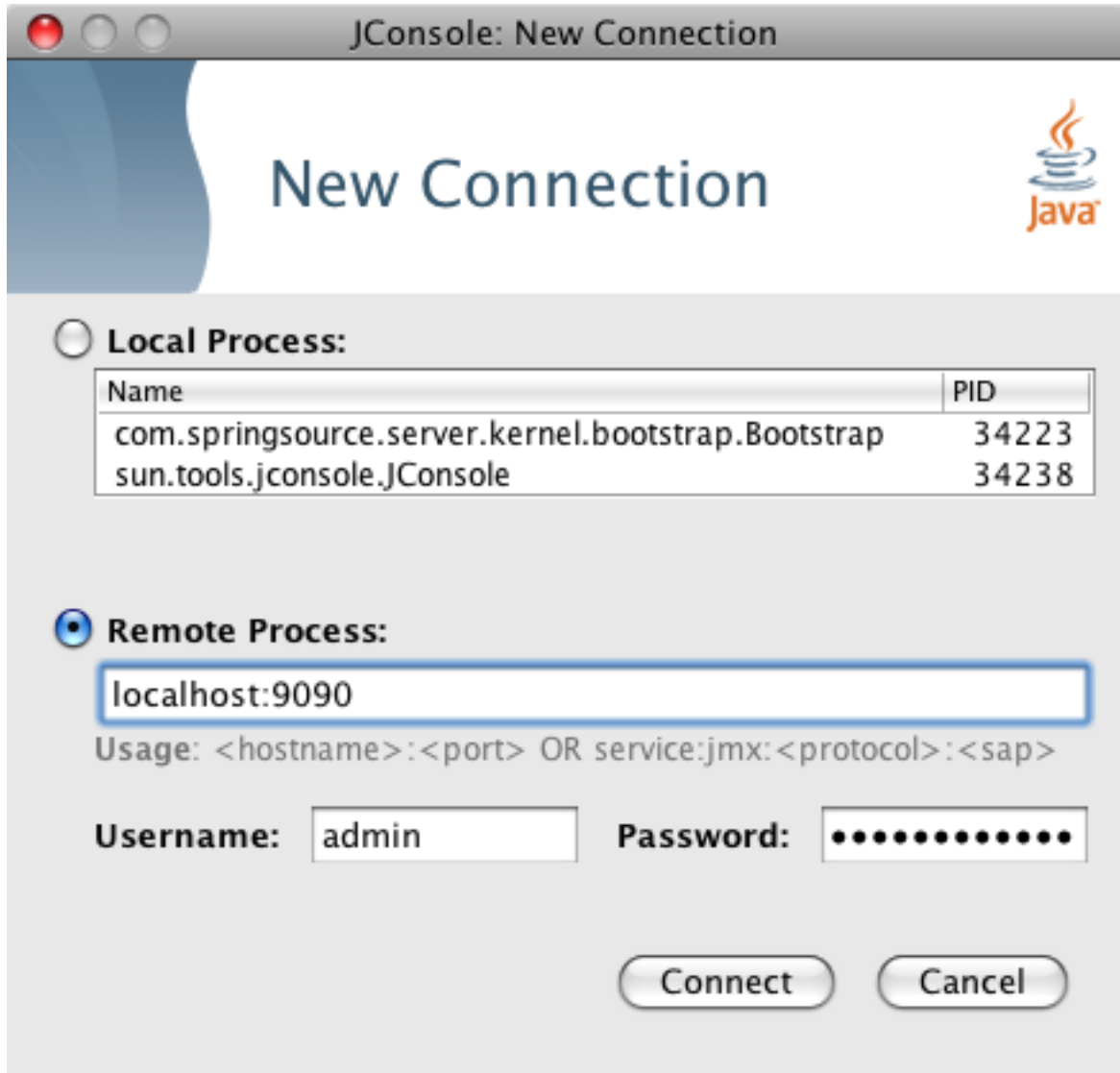
This will also start the SpringSource dm Server with JMX enabled for remote attach over SSL with username and password authentication. This allows for JConsole to be attached using the remote connection option on port 9875 with a default username and password of admin and springsource.



To start with the JMX remote access on a specific port number, pass this port number in as the value for the `-jmxport` argument:

```
cd %SERVER_HOME%
bin\startup.sh -jmxport 9009
```

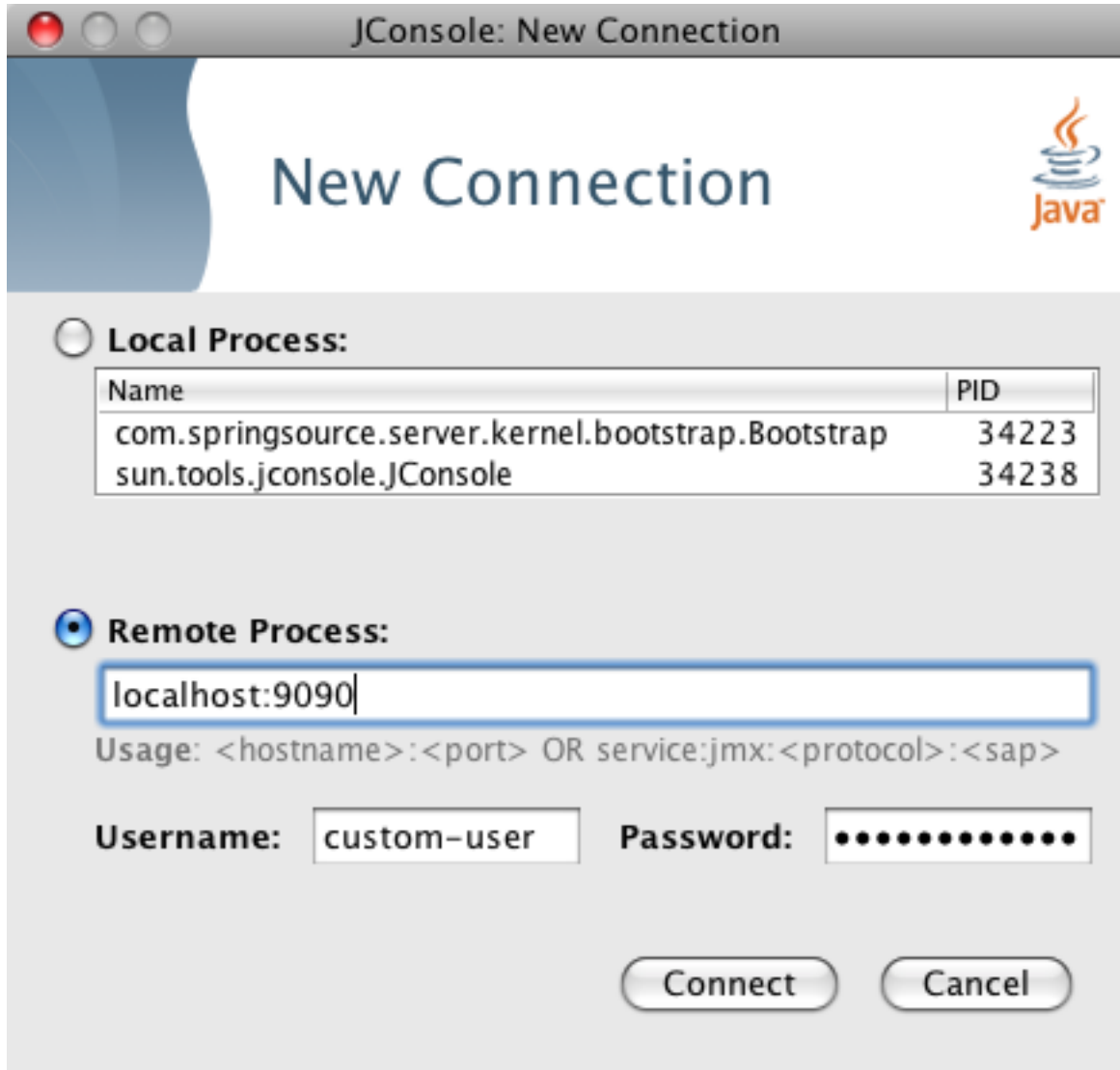
This will start the SpringSource dm Server with JMX enabled for remote attach on port 9009.



To start the JMX remote access using a custom username and password edit the file located at `%SERVER_HOME%\control\jmx-users.properties`. If you wish to use a different file for authentication, pass this filename in as the value for the `-jmxusers` argument:

```
cd %SERVER_HOME%
bin\startup.sh -jmxusers custom-jmx-users.properties
```

This will start the SpringSource dm Server with JMX enabled for remote attach using authentication credentials from `custom-jmx-users.properties`.



To start the JMX remote access using a custom SSL certificate edit the file located at `%SERVER_HOME%\control\keystore`. If you wish to use a different keystore, pass this filename in as the value for the `-keystore` argument and the keystore password in as the value for the `-keystorePassword` argument:

```
cd %SERVER_HOME%
bin\startup.sh -keystore customKeystore -keystorePassword customKeystorePassword
```

This will start the SpringSource dm Server with JMX enabled for remote attach using an SSL certificate from `customKeystore` with a password of `customKeystorePassword`.

2.5 Start with custom configuration directory

The `-configDir` option can be used to specify a config directory rather than using the default `SERVER_HOME/config` directory. This option allows the same SpringSource dm Server installation to be used to run multiple instances. Simply create a config directory for each instance, specifying unique port numbers, logging and tracing directories, etc. and specify that directory when starting SpringSource dm Server.

Note that if the path specified with `-configDir` is relative it will be interpreted as being relative to the root of the SpringSource dm Server installation.

Linux

To start SpringSource dm Server using a config directory of `/config/node1`:

```
cd $SERVER_HOME
bin/startup.sh -configDir /config/node1
```

Windows

To start SpringSource dm Server using a config directory of `c:\config\node1`:

```
cd $SERVER_HOME
bin/startup.sh -configDir c:\config\node1
```

2.6 Stop

Linux

To stop a running instance of SpringSource dm Server, run `shutdown.sh` from a new console prompt:

```
cd $SERVER_HOME
bin/shutdown.sh
```

To stop a running instance of SpringSource dm Server immediately, bypassing normal shutdown processing, run `shutdown.sh` from a new console prompt with the `-immediate` option:

```
cd $SERVER_HOME
bin/shutdown.sh -immediate
```

Microsoft Windows

To stop a running instance of SpringSource dm Server, run `shutdown.bat`:

```
cd %SERVER_HOME%  
bin\shutdown.bat
```

To stop a running instance of SpringSource dm Server immediately, bypassing normal shutdown processing, run `shutdown.bat` with the `-immediate` option:

```
cd %SERVER_HOME%  
bin\shutdown.bat -immediate
```

3. The Web based Administration Console

3.1 Authentication with the Admin Console

To use the SpringSource Admin Console, you must start the SpringSource dm Server and then enter the following address in your browser of choice.

```
http://localhost:8080/admin
```

Replace 'localhost' with the hostname of the system on which the SpringSource dm Server is running if it is not your local machine. The Admin Console uses basic security, therefore you will need to enter the default id and password.

```
ID: admin
Password: springsource
```



To change the id and password for the Admin Console, go to the following file, which is in the standard Tomcat format. Change the 'username' and 'password' values. The Admin Console runs against the admin role, therefore this cannot be changed.

```
$SERVER_HOME/config/servlet/tomcat-users.xml
```

3.2 The sections of the Admin Console

The main page displays several sections. The main section is a list of the installed artifacts and the modules that comprise them. The standard install of the dm Server will have two artifacts - the Admin Console itself and a splash screen application. As these artifacts both contain web components, a link is provided to view them in your browser.

Deployed Applications

Name	Version	Origin	Date	Undeploy
server.admin.splash-1.0.0.war	0	Hot Deployed	27-Aug-2008 16:26:09 BST	undeploy
 Associated Modules: com.springsource.server.servlet.splash (type: WAR) /				
server.admin.web-1.0.0.jar	0	Hot Deployed	27-Aug-2008 16:26:21 BST	(N/A)
 Associated Modules: com.springsource.server.servlet.admin (type: Web) /admin				

The other fields in the table give the 'Name' of the artifact, which will be the file name if none is supplied. The 'Origin' describes how the artifact was deployed. The possible values are 'Hot Deployed' as described above, 'Admin Console' if deployed through the console and 'Programmatic' if deployed programmatically, that is, through the integrated artifact deployer in the SpringSource dm Server Tools. The version will be '0' if none is supplied from the artifact. The 'Date' shows when the artifact was last deployed to the dm Server.

The Admin Console allows you to upload a file, which will be deployed automatically to the SpringSource dm Server. Once the artifact is deployed it will appear in the list of artifacts in the Admin Console. Please note that the GUI for uploading varies according to the browser and operating system used.

Deploy an Application

Select an application or bundle to upload and deploy to the server. Valid file formats: *jar, war, par*.



When clicked, the 'Upload' button reloads the page. This may take a few seconds while the file is uploaded and deployed. The list of artifacts will display the newly deployed artifacts. If there have been any problems, you can check the status message at the top of the page. This message will otherwise report 'Application deployed'.

For more information on how to work with artifacts see the chapter entitled Chapter 6, *Working with Applications*.

At the bottom of the main page is a section giving details of the dm Server you have accessed. This may be useful for verifying that you have accessed the correct instance.

Server Properties

Name	Value
Default Time Zone	Europe/London
Embedded Tomcat	Version 6.0.18
Java Vendor	Apple Inc.
Java Version	1.5.0_13
Operating System	Mac OS X - 10.5.4
Pickup Directory	/opt/springsource-dm-server-1.0.0/pickup
SpringSource dm Server	1.0.0.BUILD-20080828142119
System Architecture	i386

4. Provisioning Repository

4.1 Introduction

In SpringSource dm Server, all third-party dependencies needed by your applications, such as Spring Framework and Hibernate, are stored in the provisioning repository. All of these dependencies are stored as valid OSGi bundles in the provisioning repository. Dependencies that are not valid OSGi bundles are not supported.

When an application is installed, if it has a dependency that cannot be satisfied from the bundles that have already been installed, the SpringSource dm Server will search the repository for a bundle that can satisfy that dependency. Dependencies between applications and third-party libraries are typically expressed using `Import-Package` or `Import-Library` (see [Programmer's Guide](#)).

Some third-party dependencies consist of multiple bundles but are logically one unit. To support this, the SpringSource dm Server introduces the concept of a library. A library is a collection of related bundles that can be referenced as a whole. More details on the creation and usage of libraries can be found in the [Programmer's Guide](#).

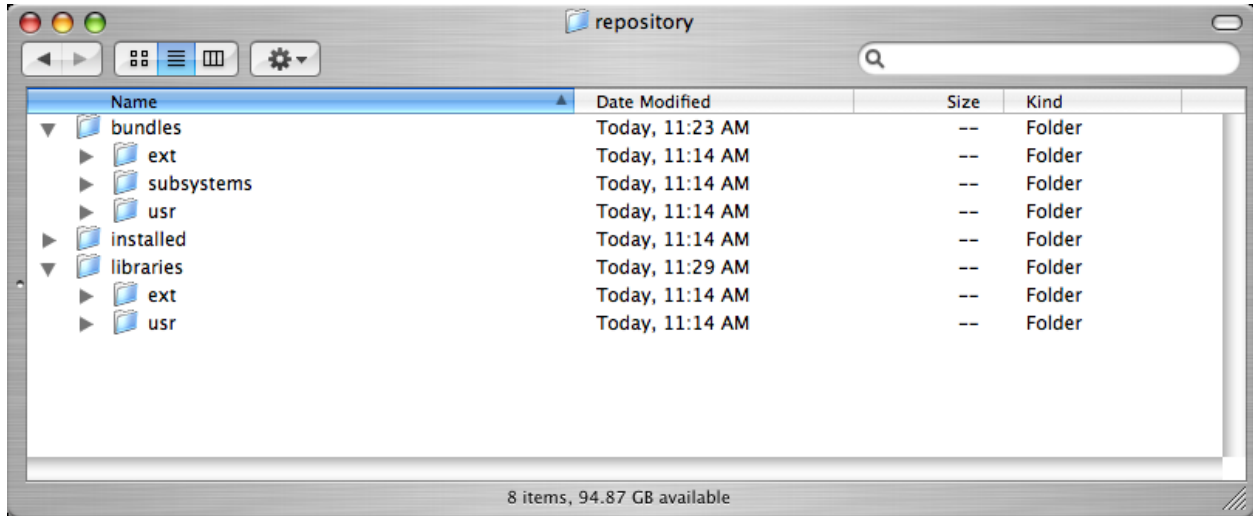
Making a third-party dependency available to your application is simply a matter of adding its bundle or library to the appropriate location in the provisioning repository.

4.2 Repository Structure

By default, the provisioning repository is located at `$SERVER_HOME/repository` and consists of three main directories: `bundles`, `libraries` and `installed`.

The `bundles` directory contains all the bundles available in the repository. The `libraries` directory contains all the library definitions. Note that libraries reference bundles that are installed elsewhere in the repository, e.g. by default under the `bundles` directory. The `installed` directory is used by the SpringSource dm Server at runtime, and should not contain used bundles or libraries.

The `bundles` directory is further subdivided into three directories: `ext`, `subsystems` and `usr`.



The `ext` and `usr` directories are intended to contain third-party bundles, with `ext` containing bundles supplied with the SpringSource dm Server and `usr` containing bundles installed by the end user. The `subsystems` directory is for internal use only.

The `libraries` directory is similarly organized, with an `ext` and `usr` directory. As with bundles, new libraries should be installed into `libraries/usr`.

4.3 Installing Bundles

To install a bundle into the bundle repository, copy it into the `$SERVER_HOME/repository/bundles/usr` directory. Bundles must have unique names so it is considered best practice to include the version number in the file name, allowing for multiple versions of the bundle to be installed.

In some cases the SpringSource dm Server manages to automatically detect changes in its provisioning repository at runtime, thereby avoiding the need to restart the dm Server.

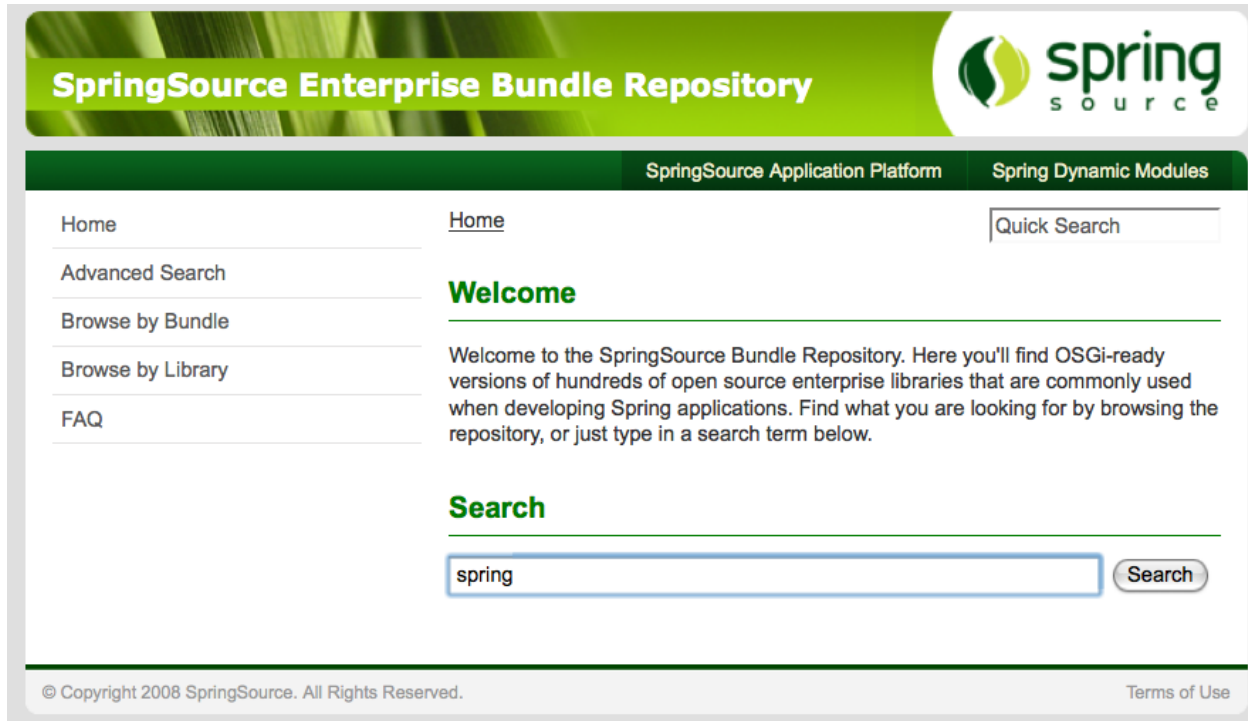
Of specific relevance during development is picking up changes to an application's direct dependencies during deployment of the application. For example, if you deploy an application and receive a message that a dependency is missing, you can simply add the dependency to the repository and then redeploy the application. The redeploy will cause the new dependency to be picked up, allowing progress to be made without restarting the dm Server. For other changes such as addition of indirect dependencies, the SpringSource dm Server must be restarted to pick up any changes to the provisioning repository.

4.4 Installing Libraries

To install a library, copy its definition into the `$SERVER_HOME/repository/libraries/usr` directory. Ensure that all referenced bundles have been installed as well.

4.5 Finding Bundles in the SpringSource Enterprise Bundle Repository

The SpringSource Enterprise Bundle Repository is located [here](#).



You can find bundles in the repository using a number of options. You use the 'Search' facility by typing in a keyword. The matching criteria returned can be explored by name, symbolic name, class, package or resource.

There is also the option of clicking on 'Browse by Bundle'. This gives an alphabetical list of bundles. You can select the desired bundle to see details and find the download link. Finally, you can also choose to 'Browse by Library', which allows you to browse the alphabetical list of libraries in the repository.

4.6 Configuring the repository

Details of how to configure a SpringSource dm Server installation's provisioning repository can be found in the [Configuration chapter](#).

5. Serviceability

5.1 Log Files

Log files are low-volume logs of important events in SpringSource dm Server. Each message written to a log file is accompanied by a 9-digit log code enclosed in angle brackets. An example is shown below:

```
[2008-03-08 17:25:28.007] server-dm-13 <SPSC0000I> - Creating ServletContainer on port 8080
```

For a breakdown of the code meanings, see the Section 9.1, “Log Codes”. By default, log files are stored in `$SERVER_HOME/serviceability/logs`.

5.2 Trace

The SpringSource dm Server's trace support serve two main purposes:

- It provides global trace files that capture high-volume information regarding the SpringSource dm Server's internal events. The files are intended for use by support personnel to diagnose runtime problems.
- It provides application trace files that contain application-generated output. This includes output generated using popular logging and tracing APIs, as well as output generated by calls to `System.out` and `System.err`. These files are intended for use by application developers and system administrators.

Entries in trace files are of the form `<timestamp> <thread-name> <source> <level> <entry-text>`. For example:

```
[2008-05-15 09:09:46.940] server-dm-2 org.apache.coyote.http11.Http11Protocol I Initializing Coyote HTTP/1.1 on
```

By default, trace files are stored in `$SERVER_HOME/serviceability/trace`.

Application Output

SpringSource dm Server provides advanced support for capturing and tracing application-generated output. It automatically partitions trace on a per-application basis and will also capture any `System.out` and `System.err` output and direct it to the generating application's `trace.log` file.

Per-application trace

SpringSource dm Server uses SLF4J-based implementations of both Commons Logging and Log4J to

route output generated by applications using those APIs to its trace files. In addition to appending such output to the global `trace.log` it will also append it to an application-specific trace file.

SpringSource dm Server writes application-specific trace to a file in a subdirectory of the configured trace directory. As described above this directory is, by default, `SERVER_HOME/serviceability/trace`. The subdirectory's name is of the form `<application-name>-<version>`. So, for example, an application named `com.myapp` at version `1` will write its trace to a file in `SERVER_HOME/serviceability/trace/com.myapp-1/`.

The levels used to filter per-application trace can be configured by using a header in the application's manifest specifying a comma-separated list of package and class names. For example:

```
Application-TraceLevels: *=info,com.myapp.*=verbose
```

This example manifest header will enable info level tracing for everything other than classes in the `com.myapp` package for which verbose level tracing will be enabled.

System.out and System.err

SpringSource dm Server captures, and traces, all output generated via `System.out` and `System.err`. This means that such output will be written to both the global `trace.log` file and to the trace file specific to the application that generated the output. The trace entries for `System.out` and `System.err` output are of the form:

```
[2008-05-16 09:28:45.874] server-tomcat-thread-1 System.out I Hello world!  
[2008-05-16 09:28:45.874] server-tomcat-thread-1 System.err E Hello world!
```

As you can see the third column indicates where the output came from, i.e. `System.out` or `System.err` and, as indicated by the fourth column, `System.out` is traced at the Info level, and `System.err` is traced at the error level.

Roll-over of trace files

SpringSource dm Server will automatically roll-over a trace file once it reaches a size of 100MB. Up to four rolled-over files will be retained in addition to the `trace.log` file to which new output is appended.

5.3 Service Dumps

A service dump is triggered when one of the following events occurs:

1. A failure is detected in the SpringSource dm Server code

2. A thread deadlock is detected

A service dump contains a snapshot of all the important state from the running SpringSource dm Server instance. This snapshot is not intended for end user consumption but is useful for service personnel.

By default, service dumps are created in `$SERVER_HOME/serviceability/dump`.

6. Working with Applications

6.1 Deploying Artifact

Artifacts can be deployed into the SpringSource dm Server using either the hot-deploy directory on the file system or by using the admin console.

Hot Deploy

To hot deploy an artifact, copy it into the `$SERVER_HOME/pickup` directory:

```
cp myapp.par $SERVER_HOME/pickup
```

When the artifact is deployed, a message similar to the following will appear in the log (time stamps omitted):

```
[2008-03-08 17:00:00.000] <SPDE0010I> - Deployment of 'myapp.par' version '0' completed.
```

If there is a problem with the deployment the console and log will both show an error message to help with troubleshooting.

Manually Deploy

To use the SpringSource Admin Console please see the chapter entitled Chapter 3, *The Web based Administration Console*.

The Admin Console allows you to upload a file, which will be deployed automatically, from your local system to the SpringSource dm Server. Once the artifact is deployed it will appear in the list of artifacts in the Admin Console. Using the upload panel shown below, you can select a file. Please note that the GUI for uploading varies according to the browser and operating system used.

Deploy an Application

Select an application or bundle to upload and deploy to the server. Valid file formats: *jar, war, par*.



The screenshot shows a web form with a green header bar containing the text 'Application Location'. Below the header is a white text input field. To the right of the input field are two buttons: 'Browse...' and 'Upload'.

When clicked, the 'Upload' button reloads the page. This may take a few seconds while the file is transmitted and deployed. The list of artifacts will display the newly deployed artifact. If there have been any problems, you can check the status message at the top of the page. This message will otherwise report that 'Application deployed'.

Admin Console

Result of the last operation: 'Application deployed'.

Deployed Applications

Name	Version	Origin	Date	Undeploy
server.admin.splash-1.0.0.war	0	Hot Deployed	27-Aug-2008 16:26:09 BST	undeploy
Associated Modules: com.springsource.server.servlet.splash (type: WAR) /				
server.admin.web-1.0.0.jar	0	Hot Deployed	27-Aug-2008 16:26:21 BST	(N/A)
Associated Modules: com.springsource.server.servlet.admin (type: Web) / admin				
org.springframework.petclinic.jdbc	1.5.0.BUILD-20080826085445	Admin Console	27-Aug-2008 16:48:16 BST	undeploy
Associated Modules: org.springframework.petclinic.domain (type: Bundle) No personality identifier org.springframework.petclinic.infrastructure.hsqldb (type: Bundle) No personality identifier org.springframework.petclinic.jdbc-synthetic.context (type: Bundle) No personality identifier org.springframework.petclinic.repository (type: Bundle) No personality identifier org.springframework.petclinic.repository.jdbc (type: Bundle) No personality identifier org.springframework.petclinic.web (type: Bundle) No personality identifier				

The other fields in the table give the 'Name' of the artifact, which will be the file name if none is supplied. The 'Origin' describes how the artifact was deployed. The possible values are 'Hot Deployed' as described above, 'Admin Console' if deployed through the console and 'Programmatic' if deployed programmatically, that is, through the integrated artifact deployer in the SpringSource dm Server Tools. The version will be '0' if none is supplied. The 'Date' shows when the artifact was last deployed to the dm Server. Finally, the 'Type' tells you if it is an OSGi application or not.

What Happens When You Deploy

When an artifact is deployed by either method it is copied to the 'work' directory of the SpringSource dm Server file structure. Several other activities take place, for example: it is registered with the SpringSource dm Server, any dependencies it has are checked to see if deployment can go ahead, and finally it is started. Because of this just dropping an artifact into the 'work' directory will not deploy the artifact.

Deployment Ordering

When deploying bundles that have dependencies it is important that you deploy them in the correct order. The SpringSource dm Server will honor this ordering when redeploying artifacts on startup.

If you are using hot deployment, be sure to copy artifacts into the `pickup` directory one-by-one. Copying the files in one group provides no guarantees of ordering.

Restrictions

The SpringSource dm Server does not support deploying fragment bundles.

6.2 Undeploying an Artifact

Artifacts can be undeployed from the SpringSource dm Server using either the hot-deploy directory on the file system, or by using the admin console.

Hot Undeploy

To hot-undeploy an artifact, remove the corresponding artifact from the `$$SERVER_HOME/pickup` directory:

```
cd $$SERVER_HOME/pickup rm myapp.par
```

When the artifact is undeployed, a message similar to the following will appear in the log:

```
[2008-03-08 17:00:05.000] <SPDE0012I> - Undeployment of 'myapp.war' version '0' completed.
```

Manually Undeploy



When undeploying an artifact you can only undeploy a whole artifact. You cannot undeploy the separate modules/bundles of an application. Each artifact that can be undeployed has a link to the right of the list of artifacts. Once you click the undeploy link, the page will be reloaded with that artifact removed from the list.

The only artifact that cannot be undeployed from the Admin Console is the Admin Console itself. This can be undeployed manually from the hot deploy directory if needed.

Admin Console

Result of the last operation: *'Application undeployed'*.

Deployed Applications

Name	Version	Origin	Date	Undeploy
server.admin.splash-1.0.0.war	0	Hot Deployed	27-Aug-2008 16:26:09 BST	undeploy
 Associated Modules: com.springsource.server.servlet.splash (type: WAR) /				
server.admin.web-1.0.0.jar	0	Hot Deployed	27-Aug-2008 16:26:21 BST	(N/A)
 Associated Modules: com.springsource.server.servlet.admin (type: Web) /admin				

If any problems have occurred the status message at the top of the page will report the error.

Admin Console

Result of the last operation: *'Deployment Error Module file [Use*

7. Configuring the SpringSource dm Server

7.1 Configuring Serviceability

The serviceability subsystem of the SpringSource dm Server is configured in the `server.config` file found in the `config` directory of the dm Server installation. Any relative paths in this file are relative to the root of the installation.

Configuring tracing

The tracing component provides two configurable settings. For example:

```
"trace": {
  "directory": "serviceability/trace",
  "levels": {
    "*" : "info",
    "com.foo.*" : "verbose",
    "com.foo.TheClass" : "debug",
    "com.bar.AnotherClass" : "verbose"
  }
}
```

In this example, the tracing component will write its output to the `SERVER_HOME/serviceability/trace` directory. The trace component provides five different levels at which trace can be output. These are, in descending order of severity: error, warn, info, debug, and verbose. The configured levels govern what trace is output and what trace is filtered out. Trace levels can be configured for individual classes or for entire packages and package trees. In this example, every class has info level tracing enabled except for those in the `com.foo` package and its subpackages which have verbose level tracing enabled, `com.foo.TheClass` which has debug level tracing enabled, and `com.bar.AnotherClass` which has verbose level tracing enabled. When determining what level of trace is enabled for any given class, the tracing component will use the level of the most specific match, e.g. `com.foo.TheClass` is a more specific match than `com.foo.*`. Any classes that are not matched by any of the configured levels will have trace disabled.

Configuring logging

The logging component provides a single configurable setting. For example:

```
"logs": {
  "directory": "serviceability/logs"
}
```

In this example the logging component will write its output to the `SERVER_HOME/serviceability/logs` directory.

Configuring dump files

The dump file component provides a single configurable setting. For example:

```
"dump": {
  "directory": "serviceability/dump"
}
```

In this example, the dump file component will write its output to the `SERVER_HOME/serviceability/dump` directory.

7.2 Configuring the Embedded Tomcat Servlet Container

The SpringSource dm Server embeds an OSGi-enhanced version of the [Tomcat Servlet Container](#) in order to provide support for deploying Java EE WARs and *Web Modules*. The embedded Servlet container can be configured via the `servletContainer.config` file located in the `SERVER_HOME/config` directory. The following listing displays the default configuration distributed with the dm Server.

```
{
  "servletContainer": {
    "version": 1.0,
    /* configDir should be either an absolute path or relative to the SERVER_HOME directory */
    "configDir": "config/servlet",
    "hostName": "localhost",
    "jvmRoute": "jvml",
    "listeners": [
      {
        /*
         * APR library loader.
         * Documentation at http://tomcat.apache.org/tomcat-6.0-doc/apr.html
         */
        "enabled": true,
        "className": "org.apache.catalina.core.AprLifecycleListener",
        "SSLEngine": "on"
      },
      {
        /*
         * Initialize Jasper prior to loading webapps.
         * Documentation at http://tomcat.apache.org/tomcat-6.0-doc/jasper-howto.html
         */
        "enabled": true,
        "className": "org.apache.catalina.core.JasperListener"
      }
    ],
    "connectors": [
      {
        /*
         * HTTP Connector.
         * Documentation at http://tomcat.apache.org/tomcat-6.0-doc/config/http.html
         */
        "enabled": true,
        "port": 8080,
        "protocol": "HTTP/1.1",
        "connectionTimeout": 20000,
        "maxThreads": 150,
        "emptySessionPath": false,
        "redirectPort": 8443
      },
      {
        /*
         * HTTPS Connector.
         * Documentation at http://tomcat.apache.org/tomcat-6.0-doc/config/http.html

```

```

    * and http://tomcat.apache.org/tomcat-6.0-doc/ssl-howto.html
    */
    "enabled": true,
    "port": 8443,
    "protocol": "HTTP/1.1",
    "scheme": "https",
    "connectionTimeout": 20000,
    "maxThreads": 150,
    "emptySessionPath": false,
    "clientAuth": false,
    /* keystoreFile should be a path relative to the configured value for servletContainer.configDir */
    "keystoreFile": "../control/keystore",
    "keystorePass": "changeit",
    "secure": true,
    "SSLEnabled": true,
    "sslProtocol": "TLS"
  },
  {
    /*
     * AJP Connector.
     * Documentation at http://tomcat.apache.org/tomcat-6.0-doc/config/ajp.html
     */
    "enabled": true,
    "port": 8009,
    "protocol": "AJP/1.3",
    "connectionTimeout": 20000,
    "redirectPort": 8443
  }
],
"logs": {
  "perApplicationLogging": true,
  /* accessLogDir should be either an absolute path or relative to the SERVER_HOME directory */
  "accessLogDir": "serviceability/logs/access",
  "accessLogFormat": "long"
},
"threadPool": {
  "minSize": 25,
  "maxSize": 200,
  "keepAlivePeriod": 60000
}
/*
 * The next section of this file is configuration for Tomcat clustering. By default this is disabled.
 */
/*,
"cluster": {
  "className": "org.apache.catalina.ha.tcp.SimpleTcpCluster",
  "channelSendOptions": 8,
  "heartbeatBackgroundEnabled": false,
  "manager": {
    "className": "org.apache.catalina.ha.session.DeltaManager",
    "expireSessionsOnShutdown": false,
    "notifyListenersOnReplication": true
  },
  "channel": {
    "className": "org.apache.catalina.tribes.group.GroupChannel",
    "membership": {
      "className": "org.apache.catalina.tribes.membership.McastService",
      "address": "228.0.0.4",
      "port": 45564,
      "frequency": 500,
      "dropTime": 3000
    },
    "receiver": {
      "className": "org.apache.catalina.tribes.transport.nio.NioReceiver",
      "address": "auto",
      "port": 4000,
      "autoBind": 100,
      "selectorTimeout": 5000,

```

```

        "maxThreads": 6
    },
    "sender": {
        "className": "org.apache.catalina.tribes.transport.ReplicationTransmitter",
        "transport": {
            "className": "org.apache.catalina.tribes.transport.nio.PooledParallelSender"
        }
    },
    "interceptors": [
        {
            "className": "org.apache.catalina.tribes.group.interceptors.TcpFailureDetector"
        },
        {
            "className": "org.apache.catalina.tribes.group.interceptors.MessageDispatch15Interceptor"
        }
    ]
},
"valves": [
    {
        "className": "org.apache.catalina.ha.tcp.ReplicationValve",
        "filter": ""
    },
    {
        "className": "org.apache.catalina.ha.session.JvmRouteBinderValve"
    }
],
"deployer": {
    "className": "org.apache.catalina.ha.deploy.FarmWarDeployer",
    "tempDir": "/tmp/war-temp/",
    "deployDir": "/tmp/war-deploy/",
    "watchDir": "/tmp/war-listen/",
    "watchEnabled": false
},
"clusterListeners": [
    {
        "className": "org.apache.catalina.ha.session.JvmRouteSessionIDBinderListener"
    },
    {
        "className": "org.apache.catalina.ha.session.ClusterSessionListener"
    }
]
}*/
}
}

```



Disabling configuration elements

Listener and Connector configuration elements can be disabled by setting the enabled flag to false. This allows you to disable but still retain the configuration for such elements without the need to delete the configuration.

Servlet Container Configuration

The following table lists all top-level options for configuring the embedded Servlet container.



Relative paths

If the configured path to a directory or file does not represent an absolute path, it will

typically be interpreted as a path relative to the `SERVER_HOME` directory.

Table 7.1. Servlet Container Configuration Values

Entry	Description	Supported Values	Default Value
version	The configuration schema version.	1.0	N/A
configDir	The path to the Servlet container's <i>config</i> directory. This directory serves as the central location for implementation-specific configuration files. The config directory also serves as the base directory for any relative-path-based configuration resources for the Servlet container. If the configured value does not represent an absolute path, it will be interpreted as a directory relative to the <code>SERVER_HOME</code> directory.	config/servlet	N/A
hostName	The host name to use for the Servlet container's default host.	Any valid <i>hostname</i> for the system on which the dm Server is running.	localhost
jvmRoute	A unique identifier for the Servlet container instance, used to configure a JVM route for load balancing.	A unique text value, typically purely alpha-numeric.	jvm1
listeners	A list of <code>LifecycleListener</code> configuration elements. Consult the official Tomcat documentation for further information on available listeners.	N/A	N/A
connectors	A list of <code>Connector</code> configuration elements. See the connector configuration section for details.	N/A	N/A
logsPerApplicationLogging	Boolean flag for enabling access logging	true or false	true

Entry	Description	Supported Values	Default Value
	logging on a per-application basis.		
logs - accessLogDir	The path to the <i>access log</i> directory where HTTP requests to the Servlet container will be logged. If the configured value does not represent an absolute path, it will be interpreted as a directory relative to the SERVER_HOME directory.	(see description)	serviceability/logs/access
logs - accessLogFormat	The style to use for formatting the <i>access log</i> .	short or long	long
threadPool - minSize	The minimum number of threads to be kept in the Servlet Container's <i>threadpool</i> .	Any positive int	25
threadPool - maxSize	The maximum number of threads to be kept in the Servlet Container's <i>threadpool</i> .	Any positive int	200
threadPool - keepAlivePeriod	The period of time, in milliseconds, that an idle thread will be kept alive in the Servlet Container's <i>threadpool</i> .	Any positive int	60000

Connector Configuration

The SpringSource dm Server supports JSON-based configuration of any connector supported by Apache Tomcat. See the default configuration above for syntax examples, and for further details on the configuration properties supported for various Connector implementations, consult the official [Tomcat HTTP Connector](#) documentation.



Configuring SSL for Tomcat

The SpringSource dm Server distribution includes a preconfigured keystore file which contains a single self-signed SSL Certificate. The password for this keystore file is `changeit`. Please note that the provided keystore file is intended for testing purposes only. For detailed instructions on how to configure Tomcat's SSL support, consult the official [Tomcat SSL Configuration HOW-TO](#).

Load Balancing Configuration

The SpringSource dm Server supports JSON-based configuration of the load balancing supported by tomcat. See the default configuration for syntax examples.

Cluster Configuration

The SpringSource dm Server supports JSON-based configuration of the clustering supported by Apache Tomcat. See the default configuration (which is disabled) for syntax examples, and for further details on the configuration properties support for `Cluster` implementations, consult the official [Tomcat Clustering/Session Replication HOW-TO](#) documentation.

Tomcat Configuration Files

In addition to the aforementioned configuration options, various parts of the embedded Tomcat Servlet container can be configured via the following files located in the Servlet container's configuration directory (see `configDir` above). The syntax and usage of each file comply with that of a standard Tomcat installation.

- **context.xml**: XML based configuration file which will be loaded for each web application `Context` deployed on the dm Server.
- **tomcat-users.xml**: XML based configuration file used to manage users, passwords, and roles for an in-memory security realm. This file is used by the dm Server to configure a `MemoryRealm` for the embedded Tomcat Servlet container.
- **web.xml**: The default `web.xml` deployment descriptor used for all web applications deployed on the dm Server. As each web application is deployed, this file is processed, followed by the `/WEB-INF/web.xml` deployment descriptor packaged with the web application itself, if present.

7.3 Configuring Equinox

Configuring the telnet console

To change the telnet console's configuration, find the `server.config` file in the `SERVER_HOME/config` directory and edit the 'enabled' and 'port' entries in the 'osgiConsole' section. By default the console is enabled and listens on port 2401:

```
"osgiConsole" : {  
  "enabled" : true,  
  "port" : 2401  
}
```

7.4 Configuring Deployment

Configuring the Deployment Timeout

To change the deployment timeout, edit the `deployer.config` file in the `SERVER_HOME/config` directory. The following listing displays the default configuration distributed with the dm Server.

```
{
  "deployer" : {
    "version" : 1.0,
    "deploymentTimeoutSeconds" : 30
  }
}
```

7.5 Configuring the Provisioning Repository

The locations which the SpringSource dm Server will include in its provisioning repository can be configured by editing the `server.config` file in the `SERVER_HOME/config` directory. The default locations are implied, rather than being explicitly defined in the configuration file. The default configuration is equivalent to the following node in the configuration file:

```
"provisioning" : {
  "searchPaths": [
    "repository/bundles/subsystems/{name}/{bundle}.jar",
    "repository/bundles/ext/{bundle}",
    "repository/bundles/usr/{bundle}",
    "repository/libraries/ext/{library}",
    "repository/libraries/usr/{library}"
  ]
}
```

This default configuration has five paths, each of which will be searched when locating entries for inclusion in the provisioning repository. The `repository/bundles/subsystems/{name}/{bundle}.jar`, `repository/bundles/ext/{bundle}`, and `repository/libraries/ext/{library}` are all required by a default installation and should always be included in a custom configuration.

Search Paths

Each search path defines a location that is included in that SpringSource dm Server's provisioning repository and will therefore be searched when looking for a library or bundle dependency. If a search path is relative its location is taken as being relative to the root of the installation, i.e. the `SERVER_HOME` directory.

Wildcards

Search paths provide support for wildcards. In the entries above, the path segments surrounded by curly braces, e.g. `{bundle}` and `{library}`, are wildcard entries for a directory with any name. Allowing wildcards to be named in this way is intended to improve the readability of search path configuration.

In addition to supporting the above-described form of wildcards, SpringSource dm Server also supports Ant-style paths, i.e. `*` and `**` can be used to represent any directory and any series of directories respectively. For example, `repository/bundles/usr/{bundle}` and `repository/bundles/usr/*` are directly equivalent.

A common usage of the `**` wildcard is to allow dependencies stored in a directory structure of varying depth, e.g. a local Maven repository, to be provisioned by the SpringSource dm Server.

System properties

In addition to support for wildcards, system properties can also be used within a search path. System properties are referenced as `${system.property.name}`, e.g. a search path of `${user.home}/repository/bundles` will reference the `repository/bundles` directory in the user's home directory.

Example configurations

The following examples provide sample configuration that could be used for some common use cases.

Replace bundles/usr with an Ivy cache

```
"provisioning" : {
  "searchPaths": [
    "repository/bundles/subsystems/{name}/{bundle}.jar",
    "repository/bundles/ext/{bundle}",
    "${user.home}/.ivy2/cache/{org}/{name}/{version}/{bundle}.jar",
    "repository/libraries/ext/{library}",
    "repository/libraries/usr/{library}"
  ]
}
```

Replace bundles/usr with a Maven local repository

```
"provisioning" : {
  "searchPaths": [
    "repository/bundles/subsystems/{name}/{bundle}.jar",
    "repository/bundles/ext/{bundle}",
    "${user.home}/.maven/repository/**/{bundle}.jar",
    "repository/libraries/ext/{library}",
    "repository/libraries/usr/{library}"
  ]
}
```

8. Known Issues

8.1 Timeout During Startup Due to Firewall Settings

The dm Server will fail to start correctly if it is prevented from connecting to needed ports by the firewall. Typically this manifests as error `SPPM0003E`. Configuring the firewall to allow the dm Server process to bind to the necessary ports will prevent this error from occurring.

8.2 OutOfMemoryError: PermGen space running on Sun VM

As a result of Sun Java bug [4957990](#), the SpringSource dm Server may consume more PermGen space than expected when running with the server HotSpot compiler. This problem may be resolved by configuring the `JAVA_OPTS` environment variable to specify an increased `MaxPermSize`, for example `-XX:MaxPermSize=128M`.

9. Log Error Codes

9.1 Log Codes

Each log message is accompanied by a log code which is useful in understanding the current state of the dm Server. Log codes are of the form: 'SPXY1234L', where SP stands for *Spring Server*, XY stands for the subsystem code, 1234 represents the error number, and L conveys the level of severity of the event being logged.

Subsystem Codes

Below is the list of subsystem codes and their corresponding subsystems:

- CC - Concurrent
- CN - Control
- CO - Config
- DE - Deployer
- FF - FFDC
- KB - Bootstrap
- KE - Kernel
- OP - OSGi
- PM - Profile
- SC - Servlet
- WE - Web

Error Number

The error numbers start from 0000 and typically increase by 1. There is no upper limit for error numbers.

Event Severity

- E - Error

- W - Warn
- I - Info

Error denotes that there are problems in the dm Server, such as incorrect behaviour of the system. This is the most serious of the log events.

Warn denotes that errors exist, but they are not critical and may be overlooked.

Info provides information about events in the system that may be useful in diagnosing warnings and errors. Such events are not severe.

9.2 Detailed Log Codes

In each instance where they appear, %s represents a variable which will be substituted with a string, and %d represents a variable which will be substituted with a number.

Concurrent Log Codes

Table 9.1. Concurrent Log Codes

Code	Message
CC0000E	<ul style="list-style-type: none"> • Deadlock(s) detected. Generating dump file. See dump for more details.

Control Log Codes

Table 9.2. Control Log Codes

Code	Message
CN0000E	<ul style="list-style-type: none"> • The attempt to register a control MBean for the service \${service} with definition interface \${interface} failed. The cause of the failure follows:

Code	Message				
	<table border="1"> <thead> <tr> <th data-bbox="818 285 1118 342">Inserts</th> <th data-bbox="1118 285 1414 342">Description</th> </tr> </thead> <tbody> <tr> <td data-bbox="818 342 1118 579"> <ul style="list-style-type: none"> • service • interface </td> <td data-bbox="1118 342 1414 579"> <ul style="list-style-type: none"> • The service • The definition interface </td> </tr> </tbody> </table>	Inserts	Description	<ul style="list-style-type: none"> • service • interface 	<ul style="list-style-type: none"> • The service • The definition interface
Inserts	Description				
<ul style="list-style-type: none"> • service • interface 	<ul style="list-style-type: none"> • The service • The definition interface 				
CN0001E	<ul style="list-style-type: none"> • The class <code>{class}</code> under which service reference <code>{reference}</code> was registered could not be loaded from bundle <code>{bundle}</code>. <table border="1"> <thead> <tr> <th data-bbox="818 816 1118 873">Inserts</th> <th data-bbox="1118 816 1414 873">Description</th> </tr> </thead> <tbody> <tr> <td data-bbox="818 873 1118 1455"> <ul style="list-style-type: none"> • class • reference • bundle </td> <td data-bbox="1118 873 1414 1455"> <ul style="list-style-type: none"> • The class under which the service reference is registered • Service reference • The bundle where the registered class should be loaded from </td> </tr> </tbody> </table>	Inserts	Description	<ul style="list-style-type: none"> • class • reference • bundle 	<ul style="list-style-type: none"> • The class under which the service reference is registered • Service reference • The bundle where the registered class should be loaded from
Inserts	Description				
<ul style="list-style-type: none"> • class • reference • bundle 	<ul style="list-style-type: none"> • The class under which the service reference is registered • Service reference • The bundle where the registered class should be loaded from 				
CN0002E	<ul style="list-style-type: none"> • The attempt to unregister the control MBean registered as <code>{mbean}</code> failed. The cause of the failure follows: <table border="1"> <thead> <tr> <th data-bbox="818 1724 1118 1780">Inserts</th> <th data-bbox="1118 1724 1414 1780">Description</th> </tr> </thead> <tbody> <tr> <td data-bbox="818 1780 1118 1904"> <ul style="list-style-type: none"> • mbean </td> <td data-bbox="1118 1780 1414 1904"> <ul style="list-style-type: none"> • The name which the control </td> </tr> </tbody> </table>	Inserts	Description	<ul style="list-style-type: none"> • mbean 	<ul style="list-style-type: none"> • The name which the control
Inserts	Description				
<ul style="list-style-type: none"> • mbean 	<ul style="list-style-type: none"> • The name which the control 				

Code	Message				
	<table border="1"> <thead> <tr> <th data-bbox="820 285 1118 342">Inserts</th> <th data-bbox="1122 285 1417 342">Description</th> </tr> </thead> <tbody> <tr> <td data-bbox="820 344 1118 470"></td> <td data-bbox="1122 344 1417 470">MBean is registered as</td> </tr> </tbody> </table>	Inserts	Description		MBean is registered as
Inserts	Description				
	MBean is registered as				
CN0003E	<ul style="list-style-type: none"> Immediate shutdown initiated. 				
CN0004I	<ul style="list-style-type: none"> Shutdown initiated. 				

Config Log Codes

Table 9.3. Config Log Codes

Code	Message				
CO0000E	<ul style="list-style-type: none"> Configuration list not found at <code>'\${path}'</code>. <table border="1"> <thead> <tr> <th data-bbox="820 1136 1118 1192">Inserts</th> <th data-bbox="1122 1136 1417 1192">Description</th> </tr> </thead> <tbody> <tr> <td data-bbox="820 1194 1118 1320"> <ul style="list-style-type: none"> path </td> <td data-bbox="1122 1194 1417 1320"> <ul style="list-style-type: none"> configuration list path </td> </tr> </tbody> </table>	Inserts	Description	<ul style="list-style-type: none"> path 	<ul style="list-style-type: none"> configuration list path
Inserts	Description				
<ul style="list-style-type: none"> path 	<ul style="list-style-type: none"> configuration list path 				
CO0001E	<ul style="list-style-type: none"> Configuration map not found at path <code>'\${path}'</code>. <table border="1"> <thead> <tr> <th data-bbox="820 1516 1118 1572">Inserts</th> <th data-bbox="1122 1516 1417 1572">Description</th> </tr> </thead> <tbody> <tr> <td data-bbox="820 1575 1118 1785"> <ul style="list-style-type: none"> path </td> <td data-bbox="1122 1575 1417 1785"> <ul style="list-style-type: none"> The configuration map's path location </td> </tr> </tbody> </table>	Inserts	Description	<ul style="list-style-type: none"> path 	<ul style="list-style-type: none"> The configuration map's path location
Inserts	Description				
<ul style="list-style-type: none"> path 	<ul style="list-style-type: none"> The configuration map's path location 				
CO0002E	<ul style="list-style-type: none"> Configuration map at path 				

Code	Message				
	<p data-bbox="849 289 1417 359">'\${path}' contained an invalid key '\${key}'.</p> <table border="1" data-bbox="821 394 1417 737"> <thead> <tr> <th data-bbox="821 394 1118 451">Inserts</th> <th data-bbox="1118 394 1417 451">Description</th> </tr> </thead> <tbody> <tr> <td data-bbox="821 451 1118 737"> <ul style="list-style-type: none"> <li data-bbox="829 499 932 527">• path <li data-bbox="829 575 915 602">• key </td> <td data-bbox="1118 451 1417 737"> <ul style="list-style-type: none"> <li data-bbox="1127 499 1409 638">• The configuration map's path location <li data-bbox="1127 686 1284 714">• The key </td> </tr> </tbody> </table>	Inserts	Description	<ul style="list-style-type: none"> <li data-bbox="829 499 932 527">• path <li data-bbox="829 575 915 602">• key 	<ul style="list-style-type: none"> <li data-bbox="1127 499 1409 638">• The configuration map's path location <li data-bbox="1127 686 1284 714">• The key
Inserts	Description				
<ul style="list-style-type: none"> <li data-bbox="829 499 932 527">• path <li data-bbox="829 575 915 602">• key 	<ul style="list-style-type: none"> <li data-bbox="1127 499 1409 638">• The configuration map's path location <li data-bbox="1127 686 1284 714">• The key 				
CO0003E	<ul style="list-style-type: none"> <li data-bbox="821 821 1417 926">• Configuration map at path '\${path}' omitted the key '\${key}'. <table border="1" data-bbox="821 961 1417 1304"> <thead> <tr> <th data-bbox="821 961 1118 1018">Inserts</th> <th data-bbox="1118 961 1417 1018">Description</th> </tr> </thead> <tbody> <tr> <td data-bbox="821 1018 1118 1304"> <ul style="list-style-type: none"> <li data-bbox="829 1066 932 1094">• path <li data-bbox="829 1142 915 1169">• key </td> <td data-bbox="1118 1018 1417 1304"> <ul style="list-style-type: none"> <li data-bbox="1127 1066 1409 1205">• The configuration map's path location <li data-bbox="1127 1253 1284 1281">• The key </td> </tr> </tbody> </table>	Inserts	Description	<ul style="list-style-type: none"> <li data-bbox="829 1066 932 1094">• path <li data-bbox="829 1142 915 1169">• key 	<ul style="list-style-type: none"> <li data-bbox="1127 1066 1409 1205">• The configuration map's path location <li data-bbox="1127 1253 1284 1281">• The key
Inserts	Description				
<ul style="list-style-type: none"> <li data-bbox="829 1066 932 1094">• path <li data-bbox="829 1142 915 1169">• key 	<ul style="list-style-type: none"> <li data-bbox="1127 1066 1409 1205">• The configuration map's path location <li data-bbox="1127 1253 1284 1281">• The key 				
CO0004E	<ul style="list-style-type: none"> <li data-bbox="821 1388 1417 1457">• Configuration scalar not found at path '\${path}' <table border="1" data-bbox="821 1493 1417 1759"> <thead> <tr> <th data-bbox="821 1493 1118 1549">Inserts</th> <th data-bbox="1118 1493 1417 1549">Description</th> </tr> </thead> <tbody> <tr> <td data-bbox="821 1549 1118 1759"> <ul style="list-style-type: none"> <li data-bbox="829 1598 932 1625">• path </td> <td data-bbox="1118 1549 1417 1759"> <ul style="list-style-type: none"> <li data-bbox="1127 1598 1409 1736">• The configuration scalar's path location </td> </tr> </tbody> </table>	Inserts	Description	<ul style="list-style-type: none"> <li data-bbox="829 1598 932 1625">• path 	<ul style="list-style-type: none"> <li data-bbox="1127 1598 1409 1736">• The configuration scalar's path location
Inserts	Description				
<ul style="list-style-type: none"> <li data-bbox="829 1598 932 1625">• path 	<ul style="list-style-type: none"> <li data-bbox="1127 1598 1409 1736">• The configuration scalar's path location 				
CO0005E	<ul style="list-style-type: none"> <li data-bbox="821 1843 1417 1913">• Configuration enumeration at path '\${path}' contained an 				

Code	Message				
	<p data-bbox="849 289 1284 321">invalid value '\${value}'.</p> <table border="1" data-bbox="821 359 1414 695"> <thead> <tr> <th data-bbox="821 359 1118 415">Inserts</th> <th data-bbox="1118 359 1414 415">Description</th> </tr> </thead> <tbody> <tr> <td data-bbox="821 415 1118 695"> <ul style="list-style-type: none"> <li data-bbox="829 464 932 495">• path <li data-bbox="829 533 948 564">• value </td> <td data-bbox="1118 415 1414 695"> <ul style="list-style-type: none"> <li data-bbox="1127 464 1393 604">• The configuration enumeration's location path <li data-bbox="1127 642 1281 674">• A value </td> </tr> </tbody> </table>	Inserts	Description	<ul style="list-style-type: none"> <li data-bbox="829 464 932 495">• path <li data-bbox="829 533 948 564">• value 	<ul style="list-style-type: none"> <li data-bbox="1127 464 1393 604">• The configuration enumeration's location path <li data-bbox="1127 642 1281 674">• A value
Inserts	Description				
<ul style="list-style-type: none"> <li data-bbox="829 464 932 495">• path <li data-bbox="829 533 948 564">• value 	<ul style="list-style-type: none"> <li data-bbox="1127 464 1393 604">• The configuration enumeration's location path <li data-bbox="1127 642 1281 674">• A value 				
CO0006E	<p data-bbox="821 783 1422 888">• Configuration integer at path '\${path}' contained an unrecognized value '\${value}'.</p> <table border="1" data-bbox="821 926 1414 1262"> <thead> <tr> <th data-bbox="821 926 1118 982">Inserts</th> <th data-bbox="1118 926 1414 982">Description</th> </tr> </thead> <tbody> <tr> <td data-bbox="821 982 1118 1262"> <ul style="list-style-type: none"> <li data-bbox="829 1031 932 1062">• path <li data-bbox="829 1100 948 1131">• value </td> <td data-bbox="1118 982 1414 1262"> <ul style="list-style-type: none"> <li data-bbox="1127 1031 1409 1171">• The configuration integer's path location <li data-bbox="1127 1209 1281 1241">• A value </td> </tr> </tbody> </table>	Inserts	Description	<ul style="list-style-type: none"> <li data-bbox="829 1031 932 1062">• path <li data-bbox="829 1100 948 1131">• value 	<ul style="list-style-type: none"> <li data-bbox="1127 1031 1409 1171">• The configuration integer's path location <li data-bbox="1127 1209 1281 1241">• A value
Inserts	Description				
<ul style="list-style-type: none"> <li data-bbox="829 1031 932 1062">• path <li data-bbox="829 1100 948 1131">• value 	<ul style="list-style-type: none"> <li data-bbox="1127 1031 1409 1171">• The configuration integer's path location <li data-bbox="1127 1209 1281 1241">• A value 				
CO0007E	<p data-bbox="821 1350 1422 1497">• Configuration integer at path '\${path}' contained a value '\${value}' outside the permitted range.</p> <table border="1" data-bbox="821 1535 1414 1871"> <thead> <tr> <th data-bbox="821 1535 1118 1591">Inserts</th> <th data-bbox="1118 1535 1414 1591">Description</th> </tr> </thead> <tbody> <tr> <td data-bbox="821 1591 1118 1871"> <ul style="list-style-type: none"> <li data-bbox="829 1640 932 1671">• path <li data-bbox="829 1709 948 1740">• value </td> <td data-bbox="1118 1591 1414 1871"> <ul style="list-style-type: none"> <li data-bbox="1127 1640 1393 1780">• The configuration integer's location path <li data-bbox="1127 1818 1281 1850">• A value </td> </tr> </tbody> </table>	Inserts	Description	<ul style="list-style-type: none"> <li data-bbox="829 1640 932 1671">• path <li data-bbox="829 1709 948 1740">• value 	<ul style="list-style-type: none"> <li data-bbox="1127 1640 1393 1780">• The configuration integer's location path <li data-bbox="1127 1818 1281 1850">• A value
Inserts	Description				
<ul style="list-style-type: none"> <li data-bbox="829 1640 932 1671">• path <li data-bbox="829 1709 948 1740">• value 	<ul style="list-style-type: none"> <li data-bbox="1127 1640 1393 1780">• The configuration integer's location path <li data-bbox="1127 1818 1281 1850">• A value 				

Code	Message				
CO0008E	<ul style="list-style-type: none"> • Configuration version at path <code>'\${path}'</code> contained an unrecognized value <code>'\${value}'</code>. <table border="1" data-bbox="821 457 1419 793"> <thead> <tr> <th data-bbox="821 457 1122 514">Inserts</th> <th data-bbox="1122 457 1419 514">Description</th> </tr> </thead> <tbody> <tr> <td data-bbox="821 514 1122 793"> <ul style="list-style-type: none"> • path • value </td> <td data-bbox="1122 514 1419 793"> <ul style="list-style-type: none"> • The configuration version's path location • A value </td> </tr> </tbody> </table>	Inserts	Description	<ul style="list-style-type: none"> • path • value 	<ul style="list-style-type: none"> • The configuration version's path location • A value
Inserts	Description				
<ul style="list-style-type: none"> • path • value 	<ul style="list-style-type: none"> • The configuration version's path location • A value 				
CO0009E	<ul style="list-style-type: none"> • Configuration version at path <code>'\${path}'</code> contained a value <code>'\${value}'</code> outside the permitted range. <table border="1" data-bbox="821 1066 1419 1402"> <thead> <tr> <th data-bbox="821 1066 1122 1123">Inserts</th> <th data-bbox="1122 1066 1419 1123">Description</th> </tr> </thead> <tbody> <tr> <td data-bbox="821 1123 1122 1402"> <ul style="list-style-type: none"> • path • value </td> <td data-bbox="1122 1123 1419 1402"> <ul style="list-style-type: none"> • The configuration version's path location • A value </td> </tr> </tbody> </table>	Inserts	Description	<ul style="list-style-type: none"> • path • value 	<ul style="list-style-type: none"> • The configuration version's path location • A value
Inserts	Description				
<ul style="list-style-type: none"> • path • value 	<ul style="list-style-type: none"> • The configuration version's path location • A value 				
CO0010W	<ul style="list-style-type: none"> • Invalid configuration directory <code>'\${directory}'</code>. <table border="1" data-bbox="821 1591 1419 1780"> <thead> <tr> <th data-bbox="821 1591 1122 1648">Inserts</th> <th data-bbox="1122 1591 1419 1648">Description</th> </tr> </thead> <tbody> <tr> <td data-bbox="821 1648 1122 1780"> <ul style="list-style-type: none"> • directory </td> <td data-bbox="1122 1648 1419 1780"> <ul style="list-style-type: none"> • Configuration directory </td> </tr> </tbody> </table>	Inserts	Description	<ul style="list-style-type: none"> • directory 	<ul style="list-style-type: none"> • Configuration directory
Inserts	Description				
<ul style="list-style-type: none"> • directory 	<ul style="list-style-type: none"> • Configuration directory 				
CO0011E	<ul style="list-style-type: none"> • Unrecognized configuration point 				

Code	Message						
	<p data-bbox="852 289 1040 321">'\${point}'.</p> <table border="1" data-bbox="821 359 1422 590"> <thead> <tr> <th data-bbox="821 359 1122 415">Inserts</th> <th data-bbox="1122 359 1422 415">Description</th> </tr> </thead> <tbody> <tr> <td data-bbox="821 415 1122 590"> <ul style="list-style-type: none"> <li data-bbox="829 464 948 495">• point </td> <td data-bbox="1122 415 1422 590"> <ul style="list-style-type: none"> <li data-bbox="1130 464 1393 569">• The configuration point </td> </tr> </tbody> </table>	Inserts	Description	<ul style="list-style-type: none"> <li data-bbox="829 464 948 495">• point 	<ul style="list-style-type: none"> <li data-bbox="1130 464 1393 569">• The configuration point 		
Inserts	Description						
<ul style="list-style-type: none"> <li data-bbox="829 464 948 495">• point 	<ul style="list-style-type: none"> <li data-bbox="1130 464 1393 569">• The configuration point 						
CO0012W	<ul style="list-style-type: none"> <li data-bbox="821 674 1422 741">• Invalid configuration filename '\${filename}'. <table border="1" data-bbox="821 779 1422 968"> <thead> <tr> <th data-bbox="821 779 1122 835">Inserts</th> <th data-bbox="1122 779 1422 835">Description</th> </tr> </thead> <tbody> <tr> <td data-bbox="821 835 1122 968"> <ul style="list-style-type: none"> <li data-bbox="829 884 1003 915">• filename </td> <td data-bbox="1122 835 1422 968"> <ul style="list-style-type: none"> <li data-bbox="1130 884 1393 951">• Configuration filename </td> </tr> </tbody> </table>	Inserts	Description	<ul style="list-style-type: none"> <li data-bbox="829 884 1003 915">• filename 	<ul style="list-style-type: none"> <li data-bbox="1130 884 1393 951">• Configuration filename 		
Inserts	Description						
<ul style="list-style-type: none"> <li data-bbox="829 884 1003 915">• filename 	<ul style="list-style-type: none"> <li data-bbox="1130 884 1393 951">• Configuration filename 						
CO1000E	<ul style="list-style-type: none"> <li data-bbox="821 1052 1422 1199">• Parser error [line=\${line}, column=\${column}]. Numbers should never have a leading zero. <table border="1" data-bbox="821 1236 1422 1467"> <thead> <tr> <th data-bbox="821 1236 1122 1293">Inserts</th> <th data-bbox="1122 1236 1422 1293">Description</th> </tr> </thead> <tbody> <tr> <td data-bbox="821 1293 1122 1398"> <ul style="list-style-type: none"> <li data-bbox="829 1341 932 1373">• line </td> <td data-bbox="1122 1293 1422 1398"> <ul style="list-style-type: none"> <li data-bbox="1130 1341 1354 1373">• line number </td> </tr> <tr> <td data-bbox="821 1398 1122 1467"> <ul style="list-style-type: none"> <li data-bbox="829 1409 967 1440">• column </td> <td data-bbox="1122 1398 1422 1467"> <ul style="list-style-type: none"> <li data-bbox="1130 1409 1393 1440">• column number </td> </tr> </tbody> </table>	Inserts	Description	<ul style="list-style-type: none"> <li data-bbox="829 1341 932 1373">• line 	<ul style="list-style-type: none"> <li data-bbox="1130 1341 1354 1373">• line number 	<ul style="list-style-type: none"> <li data-bbox="829 1409 967 1440">• column 	<ul style="list-style-type: none"> <li data-bbox="1130 1409 1393 1440">• column number
Inserts	Description						
<ul style="list-style-type: none"> <li data-bbox="829 1341 932 1373">• line 	<ul style="list-style-type: none"> <li data-bbox="1130 1341 1354 1373">• line number 						
<ul style="list-style-type: none"> <li data-bbox="829 1409 967 1440">• column 	<ul style="list-style-type: none"> <li data-bbox="1130 1409 1393 1440">• column number 						
CO1001E	<ul style="list-style-type: none"> <li data-bbox="821 1545 1422 1650">• Parser error [line=\${line}, column=\${column}]. Strings must be quoted. <table border="1" data-bbox="821 1688 1422 1919"> <thead> <tr> <th data-bbox="821 1688 1122 1745">Inserts</th> <th data-bbox="1122 1688 1422 1745">Description</th> </tr> </thead> <tbody> <tr> <td data-bbox="821 1745 1122 1850"> <ul style="list-style-type: none"> <li data-bbox="829 1793 932 1824">• line </td> <td data-bbox="1122 1745 1422 1850"> <ul style="list-style-type: none"> <li data-bbox="1130 1793 1354 1824">• line number </td> </tr> <tr> <td data-bbox="821 1850 1122 1919"> <ul style="list-style-type: none"> <li data-bbox="829 1860 967 1892">• column </td> <td data-bbox="1122 1850 1422 1919"> <ul style="list-style-type: none"> <li data-bbox="1130 1860 1393 1892">• column number </td> </tr> </tbody> </table>	Inserts	Description	<ul style="list-style-type: none"> <li data-bbox="829 1793 932 1824">• line 	<ul style="list-style-type: none"> <li data-bbox="1130 1793 1354 1824">• line number 	<ul style="list-style-type: none"> <li data-bbox="829 1860 967 1892">• column 	<ul style="list-style-type: none"> <li data-bbox="1130 1860 1393 1892">• column number
Inserts	Description						
<ul style="list-style-type: none"> <li data-bbox="829 1793 932 1824">• line 	<ul style="list-style-type: none"> <li data-bbox="1130 1793 1354 1824">• line number 						
<ul style="list-style-type: none"> <li data-bbox="829 1860 967 1892">• column 	<ul style="list-style-type: none"> <li data-bbox="1130 1860 1393 1892">• column number 						

Code	Message						
	<table border="1"> <thead> <tr> <th data-bbox="816 285 1118 342">Inserts</th> <th data-bbox="1118 285 1417 342">Description</th> </tr> </thead> <tbody> <tr> <td data-bbox="816 342 1118 365"></td> <td data-bbox="1118 342 1417 365"></td> </tr> </tbody> </table>	Inserts	Description				
Inserts	Description						
CO1002E	<ul style="list-style-type: none"> Parser error [line=\${line}, column=\${column}]. Invalid exponent. <table border="1"> <thead> <tr> <th data-bbox="816 596 1118 653">Inserts</th> <th data-bbox="1118 596 1417 653">Description</th> </tr> </thead> <tbody> <tr> <td data-bbox="816 653 1118 758"> <ul style="list-style-type: none"> line </td> <td data-bbox="1118 653 1417 758"> <ul style="list-style-type: none"> line number </td> </tr> <tr> <td data-bbox="816 758 1118 821"> <ul style="list-style-type: none"> column </td> <td data-bbox="1118 758 1417 821"> <ul style="list-style-type: none"> column number </td> </tr> </tbody> </table>	Inserts	Description	<ul style="list-style-type: none"> line 	<ul style="list-style-type: none"> line number 	<ul style="list-style-type: none"> column 	<ul style="list-style-type: none"> column number
Inserts	Description						
<ul style="list-style-type: none"> line 	<ul style="list-style-type: none"> line number 						
<ul style="list-style-type: none"> column 	<ul style="list-style-type: none"> column number 						
CO1003E	<ul style="list-style-type: none"> Parser error [line=\${line}, column=\${column}]. Extraneous data found at end of input. <table border="1"> <thead> <tr> <th data-bbox="816 1050 1118 1106">Inserts</th> <th data-bbox="1118 1050 1417 1106">Description</th> </tr> </thead> <tbody> <tr> <td data-bbox="816 1106 1118 1211"> <ul style="list-style-type: none"> line </td> <td data-bbox="1118 1106 1417 1211"> <ul style="list-style-type: none"> line number </td> </tr> <tr> <td data-bbox="816 1211 1118 1274"> <ul style="list-style-type: none"> column </td> <td data-bbox="1118 1211 1417 1274"> <ul style="list-style-type: none"> column number </td> </tr> </tbody> </table>	Inserts	Description	<ul style="list-style-type: none"> line 	<ul style="list-style-type: none"> line number 	<ul style="list-style-type: none"> column 	<ul style="list-style-type: none"> column number
Inserts	Description						
<ul style="list-style-type: none"> line 	<ul style="list-style-type: none"> line number 						
<ul style="list-style-type: none"> column 	<ul style="list-style-type: none"> column number 						
CO1004E	<ul style="list-style-type: none"> Parser error [line=\${line}, column=\${column}]. Unexpectedly run out of data. Expecting to find '%s1'. <table border="1"> <thead> <tr> <th data-bbox="816 1541 1118 1598">Inserts</th> <th data-bbox="1118 1541 1417 1598">Description</th> </tr> </thead> <tbody> <tr> <td data-bbox="816 1598 1118 1703"> <ul style="list-style-type: none"> line </td> <td data-bbox="1118 1598 1417 1703"> <ul style="list-style-type: none"> line number </td> </tr> <tr> <td data-bbox="816 1703 1118 1766"> <ul style="list-style-type: none"> column </td> <td data-bbox="1118 1703 1417 1766"> <ul style="list-style-type: none"> column number </td> </tr> </tbody> </table>	Inserts	Description	<ul style="list-style-type: none"> line 	<ul style="list-style-type: none"> line number 	<ul style="list-style-type: none"> column 	<ul style="list-style-type: none"> column number
Inserts	Description						
<ul style="list-style-type: none"> line 	<ul style="list-style-type: none"> line number 						
<ul style="list-style-type: none"> column 	<ul style="list-style-type: none"> column number 						
CO1005E	<ul style="list-style-type: none"> Parser error [line=\${line}, 						

Code	Message						
	<p>column=\${column}]. Mismatched input '%s1' expecting '%s2'.</p> <table border="1" data-bbox="821 394 1414 621"> <thead> <tr> <th data-bbox="821 394 1118 451">Inserts</th> <th data-bbox="1118 394 1414 451">Description</th> </tr> </thead> <tbody> <tr> <td data-bbox="821 451 1118 562"> <ul style="list-style-type: none"> • line </td> <td data-bbox="1118 451 1414 562"> <ul style="list-style-type: none"> • line number </td> </tr> <tr> <td data-bbox="821 562 1118 621"> <ul style="list-style-type: none"> • column </td> <td data-bbox="1118 562 1414 621"> <ul style="list-style-type: none"> • column number </td> </tr> </tbody> </table>	Inserts	Description	<ul style="list-style-type: none"> • line 	<ul style="list-style-type: none"> • line number 	<ul style="list-style-type: none"> • column 	<ul style="list-style-type: none"> • column number
Inserts	Description						
<ul style="list-style-type: none"> • line 	<ul style="list-style-type: none"> • line number 						
<ul style="list-style-type: none"> • column 	<ul style="list-style-type: none"> • column number 						
CO1006E	<p>• Parser error [line=\${line}, column=\${column}]. Mismatched tree node: '%s1' expecting '%s2'.</p> <table border="1" data-bbox="821 886 1414 1113"> <thead> <tr> <th data-bbox="821 886 1118 942">Inserts</th> <th data-bbox="1118 886 1414 942">Description</th> </tr> </thead> <tbody> <tr> <td data-bbox="821 942 1118 1054"> <ul style="list-style-type: none"> • line </td> <td data-bbox="1118 942 1414 1054"> <ul style="list-style-type: none"> • line number </td> </tr> <tr> <td data-bbox="821 1054 1118 1113"> <ul style="list-style-type: none"> • column </td> <td data-bbox="1118 1054 1414 1113"> <ul style="list-style-type: none"> • column number </td> </tr> </tbody> </table>	Inserts	Description	<ul style="list-style-type: none"> • line 	<ul style="list-style-type: none"> • line number 	<ul style="list-style-type: none"> • column 	<ul style="list-style-type: none"> • column number
Inserts	Description						
<ul style="list-style-type: none"> • line 	<ul style="list-style-type: none"> • line number 						
<ul style="list-style-type: none"> • column 	<ul style="list-style-type: none"> • column number 						
CO1007E	<p>• Parser error [line=\${line}, column=\${column}]. No viable alternative at input '%s1'.</p> <table border="1" data-bbox="821 1339 1414 1566"> <thead> <tr> <th data-bbox="821 1339 1118 1396">Inserts</th> <th data-bbox="1118 1339 1414 1396">Description</th> </tr> </thead> <tbody> <tr> <td data-bbox="821 1396 1118 1507"> <ul style="list-style-type: none"> • line </td> <td data-bbox="1118 1396 1414 1507"> <ul style="list-style-type: none"> • line number </td> </tr> <tr> <td data-bbox="821 1507 1118 1566"> <ul style="list-style-type: none"> • column </td> <td data-bbox="1118 1507 1414 1566"> <ul style="list-style-type: none"> • column number </td> </tr> </tbody> </table>	Inserts	Description	<ul style="list-style-type: none"> • line 	<ul style="list-style-type: none"> • line number 	<ul style="list-style-type: none"> • column 	<ul style="list-style-type: none"> • column number
Inserts	Description						
<ul style="list-style-type: none"> • line 	<ul style="list-style-type: none"> • line number 						
<ul style="list-style-type: none"> • column 	<ul style="list-style-type: none"> • column number 						
CO1008E	<p>• Parser error [line=\${line}, column=\${column}]. Mismatched input '%s1' expecting set '%s2'.</p> <table border="1" data-bbox="821 1793 1414 1906"> <thead> <tr> <th data-bbox="821 1793 1118 1850">Inserts</th> <th data-bbox="1118 1793 1414 1850">Description</th> </tr> </thead> <tbody> <tr> <td data-bbox="821 1850 1118 1906"></td> <td data-bbox="1118 1850 1414 1906"></td> </tr> </tbody> </table>	Inserts	Description				
Inserts	Description						

Code	Message				
	<table border="1"> <thead> <tr> <th data-bbox="816 285 1118 342">Inserts</th> <th data-bbox="1118 285 1417 342">Description</th> </tr> </thead> <tbody> <tr> <td data-bbox="816 342 1118 506"> <ul style="list-style-type: none"> • line • column </td> <td data-bbox="1118 342 1417 506"> <ul style="list-style-type: none"> • line number • column number </td> </tr> </tbody> </table>	Inserts	Description	<ul style="list-style-type: none"> • line • column 	<ul style="list-style-type: none"> • line number • column number
Inserts	Description				
<ul style="list-style-type: none"> • line • column 	<ul style="list-style-type: none"> • line number • column number 				
CO1009E	<ul style="list-style-type: none"> • Parser error [line=\${line}, column=\${column}]. Rule '%s1' failed predicate: '%s2'. <table border="1"> <thead> <tr> <th data-bbox="816 737 1118 793">Inserts</th> <th data-bbox="1118 737 1417 793">Description</th> </tr> </thead> <tbody> <tr> <td data-bbox="816 793 1118 957"> <ul style="list-style-type: none"> • line • column </td> <td data-bbox="1118 793 1417 957"> <ul style="list-style-type: none"> • line number • column number </td> </tr> </tbody> </table>	Inserts	Description	<ul style="list-style-type: none"> • line • column 	<ul style="list-style-type: none"> • line number • column number
Inserts	Description				
<ul style="list-style-type: none"> • line • column 	<ul style="list-style-type: none"> • line number • column number 				
CO1010E	<ul style="list-style-type: none"> • Parser error [line=\${line}, column=\${column}]. Required (...) loop did not match anything at input '%s1'. <table border="1"> <thead> <tr> <th data-bbox="816 1230 1118 1287">Inserts</th> <th data-bbox="1118 1230 1417 1287">Description</th> </tr> </thead> <tbody> <tr> <td data-bbox="816 1287 1118 1451"> <ul style="list-style-type: none"> • line • column </td> <td data-bbox="1118 1287 1417 1451"> <ul style="list-style-type: none"> • line number • column number </td> </tr> </tbody> </table>	Inserts	Description	<ul style="list-style-type: none"> • line • column 	<ul style="list-style-type: none"> • line number • column number
Inserts	Description				
<ul style="list-style-type: none"> • line • column 	<ul style="list-style-type: none"> • line number • column number 				
CO1011E	<ul style="list-style-type: none"> • Parser error [line=\${line}, column=\${column}]. Unexpected character. Expecting '%s1', got '%s2'. <table border="1"> <thead> <tr> <th data-bbox="816 1722 1118 1778">Inserts</th> <th data-bbox="1118 1722 1417 1778">Description</th> </tr> </thead> <tbody> <tr> <td data-bbox="816 1778 1118 1894"> <ul style="list-style-type: none"> • line </td> <td data-bbox="1118 1778 1417 1894"> <ul style="list-style-type: none"> • line number </td> </tr> </tbody> </table>	Inserts	Description	<ul style="list-style-type: none"> • line 	<ul style="list-style-type: none"> • line number
Inserts	Description				
<ul style="list-style-type: none"> • line 	<ul style="list-style-type: none"> • line number 				

Code	Message						
	<table border="1"> <thead> <tr> <th>Inserts</th> <th>Description</th> </tr> </thead> <tbody> <tr> <td>• column</td> <td>• column number</td> </tr> </tbody> </table>	Inserts	Description	• column	• column number		
Inserts	Description						
• column	• column number						
CO1100E	<ul style="list-style-type: none"> Parser error [line=\${line}, column=\${column}]. Recognition error. <table border="1"> <thead> <tr> <th>Inserts</th> <th>Description</th> </tr> </thead> <tbody> <tr> <td>• line</td> <td>• line number</td> </tr> <tr> <td>• column</td> <td>• column number</td> </tr> </tbody> </table>	Inserts	Description	• line	• line number	• column	• column number
Inserts	Description						
• line	• line number						
• column	• column number						

Deployer Log Codes

Table 9.4. Deployer Log Codes

Code	Message				
DE0000E	<ul style="list-style-type: none"> Application symbolic name omitted from application descriptor '\${descriptor}'. <table border="1"> <thead> <tr> <th>Inserts</th> <th>Description</th> </tr> </thead> <tbody> <tr> <td>• descriptor</td> <td>• application descriptor</td> </tr> </tbody> </table>	Inserts	Description	• descriptor	• application descriptor
Inserts	Description				
• descriptor	• application descriptor				
DE0002E	<ul style="list-style-type: none"> Application version '\${version}' invalid in application descriptor '\${descriptor}'. <table border="1"> <thead> <tr> <th>Inserts</th> <th>Description</th> </tr> </thead> <tbody> <tr> <td></td> <td></td> </tr> </tbody> </table>	Inserts	Description		
Inserts	Description				

Code	Message				
	<table border="1"> <thead> <tr> <th data-bbox="818 285 1118 342">Inserts</th> <th data-bbox="1118 285 1414 342">Description</th> </tr> </thead> <tbody> <tr> <td data-bbox="818 342 1118 583"> <ul style="list-style-type: none"> • version • descriptor </td> <td data-bbox="1118 342 1414 583"> <ul style="list-style-type: none"> • application version number • application descriptor </td> </tr> </tbody> </table>	Inserts	Description	<ul style="list-style-type: none"> • version • descriptor 	<ul style="list-style-type: none"> • application version number • application descriptor
Inserts	Description				
<ul style="list-style-type: none"> • version • descriptor 	<ul style="list-style-type: none"> • application version number • application descriptor 				
DE0003E	<ul style="list-style-type: none"> • Application <code>'\${application}'</code> version <code>'\${version}'</code> exports the package(s) <code>'\${package}'</code> more than once. <table border="1"> <thead> <tr> <th data-bbox="818 852 1118 909">Inserts</th> <th data-bbox="1118 852 1414 909">Description</th> </tr> </thead> <tbody> <tr> <td data-bbox="818 909 1118 1224"> <ul style="list-style-type: none"> • application • version • package </td> <td data-bbox="1118 909 1414 1224"> <ul style="list-style-type: none"> • application name • version number • export package(s) </td> </tr> </tbody> </table>	Inserts	Description	<ul style="list-style-type: none"> • application • version • package 	<ul style="list-style-type: none"> • application name • version number • export package(s)
Inserts	Description				
<ul style="list-style-type: none"> • application • version • package 	<ul style="list-style-type: none"> • application name • version number • export package(s) 				
DE0004E	<ul style="list-style-type: none"> • Application <code>'\${application}'</code> version <code>'\${version}'</code> has unsatisfied constraints: <code>'\${constraints}'</code> more than once. <table border="1"> <thead> <tr> <th data-bbox="818 1493 1118 1549">Inserts</th> <th data-bbox="1118 1493 1414 1549">Description</th> </tr> </thead> <tbody> <tr> <td data-bbox="818 1549 1118 1822"> <ul style="list-style-type: none"> • application • version • constraints </td> <td data-bbox="1118 1549 1414 1822"> <ul style="list-style-type: none"> • application name • version number • constraints </td> </tr> </tbody> </table>	Inserts	Description	<ul style="list-style-type: none"> • application • version • constraints 	<ul style="list-style-type: none"> • application name • version number • constraints
Inserts	Description				
<ul style="list-style-type: none"> • application • version • constraints 	<ul style="list-style-type: none"> • application name • version number • constraints 				
DE0005E					

Code	Message				
	<ul style="list-style-type: none"> • Hot deploy failed for resource '{resource}'. <table border="1" data-bbox="821 394 1414 548"> <thead> <tr> <th data-bbox="821 394 1118 451">Inserts</th> <th data-bbox="1123 394 1414 451">Description</th> </tr> </thead> <tbody> <tr> <td data-bbox="821 457 1118 548"> <ul style="list-style-type: none"> • resource </td> <td data-bbox="1123 457 1414 548"> <ul style="list-style-type: none"> • resource name </td> </tr> </tbody> </table>	Inserts	Description	<ul style="list-style-type: none"> • resource 	<ul style="list-style-type: none"> • resource name
Inserts	Description				
<ul style="list-style-type: none"> • resource 	<ul style="list-style-type: none"> • resource name 				
DE0006E	<ul style="list-style-type: none"> • Hot re-deploy failed for resource '{resource}'. <table border="1" data-bbox="821 737 1414 890"> <thead> <tr> <th data-bbox="821 737 1118 793">Inserts</th> <th data-bbox="1123 737 1414 793">Description</th> </tr> </thead> <tbody> <tr> <td data-bbox="821 800 1118 890"> <ul style="list-style-type: none"> • resource </td> <td data-bbox="1123 800 1414 890"> <ul style="list-style-type: none"> • resource name </td> </tr> </tbody> </table>	Inserts	Description	<ul style="list-style-type: none"> • resource 	<ul style="list-style-type: none"> • resource name
Inserts	Description				
<ul style="list-style-type: none"> • resource 	<ul style="list-style-type: none"> • resource name 				
DE0007E	<ul style="list-style-type: none"> • Hot un-deploy failed for resource '{resource}'. <table border="1" data-bbox="821 1079 1414 1232"> <thead> <tr> <th data-bbox="821 1079 1118 1136">Inserts</th> <th data-bbox="1123 1079 1414 1136">Description</th> </tr> </thead> <tbody> <tr> <td data-bbox="821 1142 1118 1232"> <ul style="list-style-type: none"> • resource </td> <td data-bbox="1123 1142 1414 1232"> <ul style="list-style-type: none"> • resource name </td> </tr> </tbody> </table>	Inserts	Description	<ul style="list-style-type: none"> • resource 	<ul style="list-style-type: none"> • resource name
Inserts	Description				
<ul style="list-style-type: none"> • resource 	<ul style="list-style-type: none"> • resource name 				
DE0008E	<ul style="list-style-type: none"> • Automatic re-deployment failed for resource '{resource}'. <table border="1" data-bbox="821 1421 1414 1575"> <thead> <tr> <th data-bbox="821 1421 1118 1478">Inserts</th> <th data-bbox="1123 1421 1414 1478">Description</th> </tr> </thead> <tbody> <tr> <td data-bbox="821 1484 1118 1575"> <ul style="list-style-type: none"> • resource </td> <td data-bbox="1123 1484 1414 1575"> <ul style="list-style-type: none"> • resource name </td> </tr> </tbody> </table>	Inserts	Description	<ul style="list-style-type: none"> • resource 	<ul style="list-style-type: none"> • resource name
Inserts	Description				
<ul style="list-style-type: none"> • resource 	<ul style="list-style-type: none"> • resource name 				
DE0009E	<ul style="list-style-type: none"> • Application '{name}' version '{version}' exports package '{package}' from more than one bundle: {bundle}. 				

Code	Message				
	<table border="1"> <thead> <tr> <th data-bbox="818 285 1118 342">Inserts</th> <th data-bbox="1118 285 1414 342">Description</th> </tr> </thead> <tbody> <tr> <td data-bbox="818 342 1118 690"> <ul style="list-style-type: none"> • name • version • package • bundle </td> <td data-bbox="1118 342 1414 690"> <ul style="list-style-type: none"> • application name • version number • export package • export bundle </td> </tr> </tbody> </table>	Inserts	Description	<ul style="list-style-type: none"> • name • version • package • bundle 	<ul style="list-style-type: none"> • application name • version number • export package • export bundle
Inserts	Description				
<ul style="list-style-type: none"> • name • version • package • bundle 	<ul style="list-style-type: none"> • application name • version number • export package • export bundle 				
DE0010I	<ul style="list-style-type: none"> • Deployment of '\${application}' version '\${version}' completed. <table border="1"> <thead> <tr> <th data-bbox="818 888 1118 945">Inserts</th> <th data-bbox="1118 888 1414 945">Description</th> </tr> </thead> <tbody> <tr> <td data-bbox="818 945 1118 1150"> <ul style="list-style-type: none"> • application • version </td> <td data-bbox="1118 945 1414 1150"> <ul style="list-style-type: none"> • application name • version number </td> </tr> </tbody> </table>	Inserts	Description	<ul style="list-style-type: none"> • application • version 	<ul style="list-style-type: none"> • application name • version number
Inserts	Description				
<ul style="list-style-type: none"> • application • version 	<ul style="list-style-type: none"> • application name • version number 				
DE0011E	<ul style="list-style-type: none"> • Deployment failed. 				
DE0012I	<ul style="list-style-type: none"> • Undeployment of '\${application}' version '\${version}' completed. <table border="1"> <thead> <tr> <th data-bbox="818 1436 1118 1493">Inserts</th> <th data-bbox="1118 1436 1414 1493">Description</th> </tr> </thead> <tbody> <tr> <td data-bbox="818 1493 1118 1698"> <ul style="list-style-type: none"> • application • version </td> <td data-bbox="1118 1493 1414 1698"> <ul style="list-style-type: none"> • application name • version number </td> </tr> </tbody> </table>	Inserts	Description	<ul style="list-style-type: none"> • application • version 	<ul style="list-style-type: none"> • application name • version number
Inserts	Description				
<ul style="list-style-type: none"> • application • version 	<ul style="list-style-type: none"> • application name • version number 				
DE0013E	<ul style="list-style-type: none"> • Undeployment of '\${application}' version '\${version}' failed. 				

Code	Message				
	<table border="1"> <thead> <tr> <th data-bbox="816 285 1122 342">Inserts</th> <th data-bbox="1122 285 1417 342">Description</th> </tr> </thead> <tbody> <tr> <td data-bbox="816 342 1122 543"> <ul style="list-style-type: none"> • application • version </td> <td data-bbox="1122 342 1417 543"> <ul style="list-style-type: none"> • application name • version number </td> </tr> </tbody> </table>	Inserts	Description	<ul style="list-style-type: none"> • application • version 	<ul style="list-style-type: none"> • application name • version number
Inserts	Description				
<ul style="list-style-type: none"> • application • version 	<ul style="list-style-type: none"> • application name • version number 				
DE0014I	<ul style="list-style-type: none"> • Refresh of module '<code>{module}</code>' of '<code>{application}</code>' version '<code>{version}</code>' completed. <table border="1"> <thead> <tr> <th data-bbox="816 779 1122 835">Inserts</th> <th data-bbox="1122 779 1417 835">Description</th> </tr> </thead> <tbody> <tr> <td data-bbox="816 835 1122 1110"> <ul style="list-style-type: none"> • module • application • version </td> <td data-bbox="1122 835 1417 1110"> <ul style="list-style-type: none"> • module name • application name • version number </td> </tr> </tbody> </table>	Inserts	Description	<ul style="list-style-type: none"> • module • application • version 	<ul style="list-style-type: none"> • module name • application name • version number
Inserts	Description				
<ul style="list-style-type: none"> • module • application • version 	<ul style="list-style-type: none"> • module name • application name • version number 				
DE0015E	<ul style="list-style-type: none"> • Refresh of module '<code>{module}</code>' of '<code>{application}</code>' version '<code>{version}</code>' failed. <table border="1"> <thead> <tr> <th data-bbox="816 1346 1122 1402">Inserts</th> <th data-bbox="1122 1346 1417 1402">Description</th> </tr> </thead> <tbody> <tr> <td data-bbox="816 1402 1122 1680"> <ul style="list-style-type: none"> • module • application • version </td> <td data-bbox="1122 1402 1417 1680"> <ul style="list-style-type: none"> • module name • application name • version number </td> </tr> </tbody> </table>	Inserts	Description	<ul style="list-style-type: none"> • module • application • version 	<ul style="list-style-type: none"> • module name • application name • version number
Inserts	Description				
<ul style="list-style-type: none"> • module • application • version 	<ul style="list-style-type: none"> • module name • application name • version number 				
DE0016E	<ul style="list-style-type: none"> • Application symbolic name in application descriptor '<code>{descriptor}</code>' has invalid syntax. 				

Code	Message				
	<table border="1"> <thead> <tr> <th data-bbox="816 289 1117 346">Inserts</th> <th data-bbox="1117 289 1414 346">Description</th> </tr> </thead> <tbody> <tr> <td data-bbox="816 346 1117 478"> <ul style="list-style-type: none"> • descriptor </td> <td data-bbox="1117 346 1414 478"> <ul style="list-style-type: none"> • descriptor name </td> </tr> </tbody> </table>	Inserts	Description	<ul style="list-style-type: none"> • descriptor 	<ul style="list-style-type: none"> • descriptor name
Inserts	Description				
<ul style="list-style-type: none"> • descriptor 	<ul style="list-style-type: none"> • descriptor name 				
DE0017W	<ul style="list-style-type: none"> • Discarding bundle update location '<code>{location}</code>' of module '<code>{module}</code>' of '<code>{application}</code>' version '<code>{version}</code>' so it will not interfere with refresh. <table border="1"> <thead> <tr> <th data-bbox="816 783 1117 840">Inserts</th> <th data-bbox="1117 783 1414 840">Description</th> </tr> </thead> <tbody> <tr> <td data-bbox="816 840 1117 1228"> <ul style="list-style-type: none"> • location • module • application • version </td> <td data-bbox="1117 840 1414 1228"> <ul style="list-style-type: none"> • bundle update location • module name • application name • version number </td> </tr> </tbody> </table>	Inserts	Description	<ul style="list-style-type: none"> • location • module • application • version 	<ul style="list-style-type: none"> • bundle update location • module name • application name • version number
Inserts	Description				
<ul style="list-style-type: none"> • location • module • application • version 	<ul style="list-style-type: none"> • bundle update location • module name • application name • version number 				
DE0018E	<ul style="list-style-type: none"> • Unable to install application from location '<code>{location}</code>'. Could not satisfy constraints for bundle '<code>{bundle}</code>' at version '<code>{version}</code>'. <code>{application}</code>. <table border="1"> <thead> <tr> <th data-bbox="816 1577 1117 1633">Inserts</th> <th data-bbox="1117 1577 1414 1633">Description</th> </tr> </thead> <tbody> <tr> <td data-bbox="816 1633 1117 1923"> <ul style="list-style-type: none"> • location • bundle • version • application </td> <td data-bbox="1117 1633 1414 1923"> <ul style="list-style-type: none"> • application location • bundle name • version number </td> </tr> </tbody> </table>	Inserts	Description	<ul style="list-style-type: none"> • location • bundle • version • application 	<ul style="list-style-type: none"> • application location • bundle name • version number
Inserts	Description				
<ul style="list-style-type: none"> • location • bundle • version • application 	<ul style="list-style-type: none"> • application location • bundle name • version number 				

Code	Message				
	<table border="1"> <thead> <tr> <th data-bbox="816 285 1118 342">Inserts</th> <th data-bbox="1118 285 1417 342">Description</th> </tr> </thead> <tbody> <tr> <td data-bbox="816 342 1118 474"></td> <td data-bbox="1118 342 1417 474"> <ul style="list-style-type: none"> • application name </td> </tr> </tbody> </table>	Inserts	Description		<ul style="list-style-type: none"> • application name
Inserts	Description				
	<ul style="list-style-type: none"> • application name 				
DE0019I	<ul style="list-style-type: none"> • Ignoring undeployment of artifact <code>'\${artifact}'</code>, application is not currently deployed. <table border="1"> <thead> <tr> <th data-bbox="816 743 1118 800">Inserts</th> <th data-bbox="1118 743 1417 800">Description</th> </tr> </thead> <tbody> <tr> <td data-bbox="816 800 1118 894"> <ul style="list-style-type: none"> • artifact </td> <td data-bbox="1118 800 1417 894"> <ul style="list-style-type: none"> • artifact name </td> </tr> </tbody> </table>	Inserts	Description	<ul style="list-style-type: none"> • artifact 	<ul style="list-style-type: none"> • artifact name
Inserts	Description				
<ul style="list-style-type: none"> • artifact 	<ul style="list-style-type: none"> • artifact name 				
DE0020E	<ul style="list-style-type: none"> • Application context creation failure for bundle <code>'\${bundle}'</code>. <table border="1"> <thead> <tr> <th data-bbox="816 1087 1118 1144">Inserts</th> <th data-bbox="1118 1087 1417 1144">Description</th> </tr> </thead> <tbody> <tr> <td data-bbox="816 1144 1118 1239"> <ul style="list-style-type: none"> • bundle </td> <td data-bbox="1118 1144 1417 1239"> <ul style="list-style-type: none"> • bundle name </td> </tr> </tbody> </table>	Inserts	Description	<ul style="list-style-type: none"> • bundle 	<ul style="list-style-type: none"> • bundle name
Inserts	Description				
<ul style="list-style-type: none"> • bundle 	<ul style="list-style-type: none"> • bundle name 				
DE0021E	<ul style="list-style-type: none"> • Artifact at URI <code>'\${uri}'</code> cannot be deployed as application <code>\${application}</code> is already deployed. <table border="1"> <thead> <tr> <th data-bbox="816 1507 1118 1564">Inserts</th> <th data-bbox="1118 1507 1417 1564">Description</th> </tr> </thead> <tbody> <tr> <td data-bbox="816 1564 1118 1766"> <ul style="list-style-type: none"> • uri • application </td> <td data-bbox="1118 1564 1417 1766"> <ul style="list-style-type: none"> • uri address • application name </td> </tr> </tbody> </table>	Inserts	Description	<ul style="list-style-type: none"> • uri • application 	<ul style="list-style-type: none"> • uri address • application name
Inserts	Description				
<ul style="list-style-type: none"> • uri • application 	<ul style="list-style-type: none"> • uri address • application name 				
DE0022E	<ul style="list-style-type: none"> • Artifact at URI <code>'\${uri}'</code> cannot 				

Code	Message				
	<p>be deployed as it has the same file or directory name <code>'\${name}'</code> as application <code>\${application}</code>.</p> <table border="1" data-bbox="821 432 1416 806"> <thead> <tr> <th data-bbox="821 432 1122 489">Inserts</th> <th data-bbox="1128 432 1416 489">Description</th> </tr> </thead> <tbody> <tr> <td data-bbox="821 497 1122 806"> <ul style="list-style-type: none"> • uri • name • application </td> <td data-bbox="1128 497 1416 806"> <ul style="list-style-type: none"> • uri address • file or directory name • application name </td> </tr> </tbody> </table>	Inserts	Description	<ul style="list-style-type: none"> • uri • name • application 	<ul style="list-style-type: none"> • uri address • file or directory name • application name
Inserts	Description				
<ul style="list-style-type: none"> • uri • name • application 	<ul style="list-style-type: none"> • uri address • file or directory name • application name 				
DE0023E	<ul style="list-style-type: none"> • Error parsing application manifest. 				
DE0024E	<ul style="list-style-type: none"> • Error parsing Spring configuration file <code>'\${file}'</code>. <table border="1" data-bbox="821 1129 1416 1318"> <thead> <tr> <th data-bbox="821 1129 1122 1186">Inserts</th> <th data-bbox="1128 1129 1416 1186">Description</th> </tr> </thead> <tbody> <tr> <td data-bbox="821 1194 1122 1318"> <ul style="list-style-type: none"> • file </td> <td data-bbox="1128 1194 1416 1318"> <ul style="list-style-type: none"> • configuration file name </td> </tr> </tbody> </table>	Inserts	Description	<ul style="list-style-type: none"> • file 	<ul style="list-style-type: none"> • configuration file name
Inserts	Description				
<ul style="list-style-type: none"> • file 	<ul style="list-style-type: none"> • configuration file name 				
DE0025E	<ul style="list-style-type: none"> • Exception after module <code>'{module}'</code> started. 				
DE0026E	<ul style="list-style-type: none"> • Exception after module <code>'{module}'</code> stopped. 				
DE0027E	<ul style="list-style-type: none"> • Exception deploying module <code>'{module}'</code>. 				
DE0028E	<ul style="list-style-type: none"> • Exception stopping module <code>'{module}'</code>. 				

Code	Message								
DE0029E	<ul style="list-style-type: none"> Starting the bundle for module '{module}' threw an exception. 								
DE0030E	<ul style="list-style-type: none"> Stopping the bundle for module '{module}' threw an exception. 								
DE0031E	<ul style="list-style-type: none"> Updated module '{module}' has unsatisfied dependencies. 								
DE0032E	<ul style="list-style-type: none"> Update of module '{module}' took too long and timed out. 								
DE0033E	<ul style="list-style-type: none"> Wait for update of module '{module}' was interrupted. 								
DE0034E	<ul style="list-style-type: none"> Exception updating module '{module}'. 								
DE0035E	<ul style="list-style-type: none"> Deployment artifact '{artifact}' has no manifest. <table border="1" data-bbox="821 1190 1414 1346"> <thead> <tr> <th data-bbox="821 1190 1122 1247">Inserts</th> <th data-bbox="1122 1190 1414 1247">Description</th> </tr> </thead> <tbody> <tr> <td data-bbox="821 1247 1122 1346"> <ul style="list-style-type: none"> artifact </td> <td data-bbox="1122 1247 1414 1346"> <ul style="list-style-type: none"> artifact name </td> </tr> </tbody> </table>	Inserts	Description	<ul style="list-style-type: none"> artifact 	<ul style="list-style-type: none"> artifact name 				
Inserts	Description								
<ul style="list-style-type: none"> artifact 	<ul style="list-style-type: none"> artifact name 								
DE0036E	<ul style="list-style-type: none"> More than one bundle in scope '{scope}' version '{version}' has the same bundle symbolic name '{name}'. <table border="1" data-bbox="821 1610 1414 1906"> <thead> <tr> <th data-bbox="821 1610 1122 1667">Inserts</th> <th data-bbox="1122 1610 1414 1667">Description</th> </tr> </thead> <tbody> <tr> <td data-bbox="821 1667 1122 1766"> <ul style="list-style-type: none"> scope </td> <td data-bbox="1122 1667 1414 1766"> <ul style="list-style-type: none"> scope range </td> </tr> <tr> <td data-bbox="821 1766 1122 1864"> <ul style="list-style-type: none"> version </td> <td data-bbox="1122 1766 1414 1864"> <ul style="list-style-type: none"> version number </td> </tr> <tr> <td data-bbox="821 1864 1122 1906"> <ul style="list-style-type: none"> name </td> <td data-bbox="1122 1864 1414 1906"> <ul style="list-style-type: none"> bundle </td> </tr> </tbody> </table>	Inserts	Description	<ul style="list-style-type: none"> scope 	<ul style="list-style-type: none"> scope range 	<ul style="list-style-type: none"> version 	<ul style="list-style-type: none"> version number 	<ul style="list-style-type: none"> name 	<ul style="list-style-type: none"> bundle
Inserts	Description								
<ul style="list-style-type: none"> scope 	<ul style="list-style-type: none"> scope range 								
<ul style="list-style-type: none"> version 	<ul style="list-style-type: none"> version number 								
<ul style="list-style-type: none"> name 	<ul style="list-style-type: none"> bundle 								

Code	Message				
	<table border="1"> <thead> <tr> <th data-bbox="816 285 1118 342">Inserts</th> <th data-bbox="1118 285 1417 342">Description</th> </tr> </thead> <tbody> <tr> <td data-bbox="816 342 1118 436"></td> <td data-bbox="1118 342 1417 436">symbolic name</td> </tr> </tbody> </table>	Inserts	Description		symbolic name
Inserts	Description				
	symbolic name				
DE0037E	<ul style="list-style-type: none"> No module with bundle symbolic name <code>'\${name}'</code> was found in application <code>'\${application}'</code>. <table border="1"> <thead> <tr> <th data-bbox="816 663 1118 720">Inserts</th> <th data-bbox="1118 663 1417 720">Description</th> </tr> </thead> <tbody> <tr> <td data-bbox="816 720 1118 966"> <ul style="list-style-type: none"> name application </td> <td data-bbox="1118 720 1417 966"> <ul style="list-style-type: none"> bundle symbolic name application name </td> </tr> </tbody> </table>	Inserts	Description	<ul style="list-style-type: none"> name application 	<ul style="list-style-type: none"> bundle symbolic name application name
Inserts	Description				
<ul style="list-style-type: none"> name application 	<ul style="list-style-type: none"> bundle symbolic name application name 				
DE0038E	<ul style="list-style-type: none"> Refresh not possible as no application is deployed at <code>'\${location}'</code>. <table border="1"> <thead> <tr> <th data-bbox="816 1192 1118 1249">Inserts</th> <th data-bbox="1118 1192 1417 1249">Description</th> </tr> </thead> <tbody> <tr> <td data-bbox="816 1249 1118 1386"> <ul style="list-style-type: none"> location </td> <td data-bbox="1118 1249 1417 1386"> <ul style="list-style-type: none"> deploy location </td> </tr> </tbody> </table>	Inserts	Description	<ul style="list-style-type: none"> location 	<ul style="list-style-type: none"> deploy location
Inserts	Description				
<ul style="list-style-type: none"> location 	<ul style="list-style-type: none"> deploy location 				
DE0039E	<ul style="list-style-type: none"> Undeployment not possible as no artifact is deployed at <code>'\${location}'</code>. <table border="1"> <thead> <tr> <th data-bbox="816 1612 1118 1669">Inserts</th> <th data-bbox="1118 1612 1417 1669">Description</th> </tr> </thead> <tbody> <tr> <td data-bbox="816 1669 1118 1806"> <ul style="list-style-type: none"> location </td> <td data-bbox="1118 1669 1417 1806"> <ul style="list-style-type: none"> deploy location </td> </tr> </tbody> </table>	Inserts	Description	<ul style="list-style-type: none"> location 	<ul style="list-style-type: none"> deploy location
Inserts	Description				
<ul style="list-style-type: none"> location 	<ul style="list-style-type: none"> deploy location 				
DE0040E					

Code	Message						
	<ul style="list-style-type: none"> Deployment of module '<code>{module}</code>' took too long and timed out. <table border="1" data-bbox="820 394 1417 548"> <thead> <tr> <th data-bbox="820 394 1122 451">Inserts</th> <th data-bbox="1125 394 1417 451">Description</th> </tr> </thead> <tbody> <tr> <td data-bbox="820 455 1122 548"> <ul style="list-style-type: none"> module </td> <td data-bbox="1125 455 1417 548"> <ul style="list-style-type: none"> module name </td> </tr> </tbody> </table>	Inserts	Description	<ul style="list-style-type: none"> module 	<ul style="list-style-type: none"> module name 		
Inserts	Description						
<ul style="list-style-type: none"> module 	<ul style="list-style-type: none"> module name 						
DE0041E	<ul style="list-style-type: none"> OSGi R4 manifest with no bundle symbolic name detected: <code>{manifest}</code> for module '<code>{module}</code>'. <table border="1" data-bbox="820 814 1417 1039"> <thead> <tr> <th data-bbox="820 814 1122 871">Inserts</th> <th data-bbox="1125 814 1417 871">Description</th> </tr> </thead> <tbody> <tr> <td data-bbox="820 875 1122 968"> <ul style="list-style-type: none"> manifest </td> <td data-bbox="1125 875 1417 968"> <ul style="list-style-type: none"> manifest name </td> </tr> <tr> <td data-bbox="820 972 1122 1039"> <ul style="list-style-type: none"> module </td> <td data-bbox="1125 972 1417 1039"> <ul style="list-style-type: none"> module name </td> </tr> </tbody> </table>	Inserts	Description	<ul style="list-style-type: none"> manifest 	<ul style="list-style-type: none"> manifest name 	<ul style="list-style-type: none"> module 	<ul style="list-style-type: none"> module name
Inserts	Description						
<ul style="list-style-type: none"> manifest 	<ul style="list-style-type: none"> manifest name 						
<ul style="list-style-type: none"> module 	<ul style="list-style-type: none"> module name 						
DE0042E	<ul style="list-style-type: none"> Refresh of module '<code>{module}</code>' took too long and timed out. <table border="1" data-bbox="820 1228 1417 1381"> <thead> <tr> <th data-bbox="820 1228 1122 1285">Inserts</th> <th data-bbox="1125 1228 1417 1285">Description</th> </tr> </thead> <tbody> <tr> <td data-bbox="820 1289 1122 1381"> <ul style="list-style-type: none"> module </td> <td data-bbox="1125 1289 1417 1381"> <ul style="list-style-type: none"> module name </td> </tr> </tbody> </table>	Inserts	Description	<ul style="list-style-type: none"> module 	<ul style="list-style-type: none"> module name 		
Inserts	Description						
<ul style="list-style-type: none"> module 	<ul style="list-style-type: none"> module name 						
DE0043E	<ul style="list-style-type: none"> Wait for refresh of module '<code>{module}</code>' was interrupted. <table border="1" data-bbox="820 1570 1417 1724"> <thead> <tr> <th data-bbox="820 1570 1122 1627">Inserts</th> <th data-bbox="1125 1570 1417 1627">Description</th> </tr> </thead> <tbody> <tr> <td data-bbox="820 1631 1122 1724"> <ul style="list-style-type: none"> module </td> <td data-bbox="1125 1631 1417 1724"> <ul style="list-style-type: none"> module name </td> </tr> </tbody> </table>	Inserts	Description	<ul style="list-style-type: none"> module 	<ul style="list-style-type: none"> module name 		
Inserts	Description						
<ul style="list-style-type: none"> module 	<ul style="list-style-type: none"> module name 						
DE0044E	<ul style="list-style-type: none"> Exception refreshing module '<code>{module}</code>'. 						

Code	Message				
	<table border="1"> <thead> <tr> <th data-bbox="816 285 1118 342">Inserts</th> <th data-bbox="1118 285 1417 342">Description</th> </tr> </thead> <tbody> <tr> <td data-bbox="816 342 1118 436">• module</td> <td data-bbox="1118 342 1417 436">• module name</td> </tr> </tbody> </table>	Inserts	Description	• module	• module name
Inserts	Description				
• module	• module name				
DE0045E	<ul style="list-style-type: none"> Artifact at '<code>{location}</code>' not found. <table border="1"> <thead> <tr> <th data-bbox="816 632 1118 688">Inserts</th> <th data-bbox="1118 632 1417 688">Description</th> </tr> </thead> <tbody> <tr> <td data-bbox="816 688 1118 783">• location</td> <td data-bbox="1118 688 1417 783">• location name</td> </tr> </tbody> </table>	Inserts	Description	• location	• location name
Inserts	Description				
• location	• location name				
DE0046E	<ul style="list-style-type: none"> Artifact at '<code>{location}</code>' cannot be unpackaged. <table border="1"> <thead> <tr> <th data-bbox="816 974 1118 1031">Inserts</th> <th data-bbox="1118 974 1417 1031">Description</th> </tr> </thead> <tbody> <tr> <td data-bbox="816 1031 1118 1125">• location</td> <td data-bbox="1118 1031 1417 1125">• location name</td> </tr> </tbody> </table>	Inserts	Description	• location	• location name
Inserts	Description				
• location	• location name				
DE0047E	<ul style="list-style-type: none"> Artifact at '<code>{location}</code>' cannot be copied. <table border="1"> <thead> <tr> <th data-bbox="816 1318 1118 1375">Inserts</th> <th data-bbox="1118 1318 1417 1375">Description</th> </tr> </thead> <tbody> <tr> <td data-bbox="816 1375 1118 1470">• location</td> <td data-bbox="1118 1375 1417 1470">• location name</td> </tr> </tbody> </table>	Inserts	Description	• location	• location name
Inserts	Description				
• location	• location name				
DE1000E	<ul style="list-style-type: none"> Unknown error exception received, unable to track non-Antlr exceptions [<code>{exception}</code>] <table border="1"> <thead> <tr> <th data-bbox="816 1738 1118 1795">Inserts</th> <th data-bbox="1118 1738 1417 1795">Description</th> </tr> </thead> <tbody> <tr> <td data-bbox="816 1795 1118 1885">• exception</td> <td data-bbox="1118 1795 1417 1885">• exception</td> </tr> </tbody> </table>	Inserts	Description	• exception	• exception
Inserts	Description				
• exception	• exception				

Code	Message				
DE1001E	<ul style="list-style-type: none"> There has been an unknown recognition error exception with the Parser, it will attempt to continue [\${exception}] <table border="1" data-bbox="820 495 1414 646"> <thead> <tr> <th data-bbox="820 495 1118 552">Inserts</th> <th data-bbox="1120 495 1414 552">Description</th> </tr> </thead> <tbody> <tr> <td data-bbox="820 554 1118 646">• exception</td> <td data-bbox="1120 554 1414 646">• exception</td> </tr> </tbody> </table>	Inserts	Description	• exception	• exception
Inserts	Description				
• exception	• exception				
DE1002E	<ul style="list-style-type: none"> The parser could not find an expected symbol at the given input position [\${position}] <table border="1" data-bbox="820 875 1414 1026"> <thead> <tr> <th data-bbox="820 875 1118 932">Inserts</th> <th data-bbox="1120 875 1414 932">Description</th> </tr> </thead> <tbody> <tr> <td data-bbox="820 934 1118 1026">• position</td> <td data-bbox="1120 934 1414 1026">• position</td> </tr> </tbody> </table>	Inserts	Description	• position	• position
Inserts	Description				
• position	• position				
DE1003E	<ul style="list-style-type: none"> The parser could not find a node with the expected token type [\${token}] <table border="1" data-bbox="820 1260 1414 1411"> <thead> <tr> <th data-bbox="820 1260 1118 1316">Inserts</th> <th data-bbox="1120 1260 1414 1316">Description</th> </tr> </thead> <tbody> <tr> <td data-bbox="820 1318 1118 1411">• token</td> <td data-bbox="1120 1318 1414 1411">• token</td> </tr> </tbody> </table>	Inserts	Description	• token	• token
Inserts	Description				
• token	• token				
DE1004E	<ul style="list-style-type: none"> At this decision point the parser's look-ahead could not find a viable option [\${option}] <table border="1" data-bbox="820 1640 1414 1791"> <thead> <tr> <th data-bbox="820 1640 1118 1696">Inserts</th> <th data-bbox="1120 1640 1414 1696">Description</th> </tr> </thead> <tbody> <tr> <td data-bbox="820 1698 1118 1791">• option</td> <td data-bbox="1120 1698 1414 1791">• option</td> </tr> </tbody> </table>	Inserts	Description	• option	• option
Inserts	Description				
• option	• option				
DE1005E	<ul style="list-style-type: none"> The parser could not match a 				

Code	Message				
	<p data-bbox="849 289 1321 321">required sub rule [\${rule}]</p> <table border="1" data-bbox="821 359 1422 510"> <thead> <tr> <th data-bbox="821 359 1118 415">Inserts</th> <th data-bbox="1118 359 1422 415">Description</th> </tr> </thead> <tbody> <tr> <td data-bbox="821 415 1118 510"> <ul data-bbox="829 464 932 495" style="list-style-type: none"> • rule </td> <td data-bbox="1118 415 1422 510"> <ul data-bbox="1127 464 1229 495" style="list-style-type: none"> • rule </td> </tr> </tbody> </table>	Inserts	Description	<ul data-bbox="829 464 932 495" style="list-style-type: none"> • rule 	<ul data-bbox="1127 464 1229 495" style="list-style-type: none"> • rule
Inserts	Description				
<ul data-bbox="829 464 932 495" style="list-style-type: none"> • rule 	<ul data-bbox="1127 464 1229 495" style="list-style-type: none"> • rule 				
DE1006E	<ul data-bbox="821 596 1422 701" style="list-style-type: none"> • The parser has evaluated a validating semantic to false [\${semantic}] <table border="1" data-bbox="821 739 1422 890"> <thead> <tr> <th data-bbox="821 739 1118 795">Inserts</th> <th data-bbox="1118 739 1422 795">Description</th> </tr> </thead> <tbody> <tr> <td data-bbox="821 795 1118 890"> <ul data-bbox="829 844 1000 875" style="list-style-type: none"> • semantic </td> <td data-bbox="1118 795 1422 890"> <ul data-bbox="1127 844 1299 875" style="list-style-type: none"> • semantic </td> </tr> </tbody> </table>	Inserts	Description	<ul data-bbox="829 844 1000 875" style="list-style-type: none"> • semantic 	<ul data-bbox="1127 844 1299 875" style="list-style-type: none"> • semantic
Inserts	Description				
<ul data-bbox="829 844 1000 875" style="list-style-type: none"> • semantic 	<ul data-bbox="1127 844 1299 875" style="list-style-type: none"> • semantic 				
DE1007E	<ul data-bbox="821 978 1422 1047" style="list-style-type: none"> • The parser has failed to match a range of symbols [\${symbols}] <table border="1" data-bbox="821 1085 1422 1270"> <thead> <tr> <th data-bbox="821 1085 1118 1142">Inserts</th> <th data-bbox="1118 1085 1422 1142">Description</th> </tr> </thead> <tbody> <tr> <td data-bbox="821 1142 1118 1270"> <ul data-bbox="829 1190 984 1222" style="list-style-type: none"> • symbols </td> <td data-bbox="1118 1142 1422 1270"> <ul data-bbox="1127 1190 1422 1257" style="list-style-type: none"> • range of symbols </td> </tr> </tbody> </table>	Inserts	Description	<ul data-bbox="829 1190 984 1222" style="list-style-type: none"> • symbols 	<ul data-bbox="1127 1190 1422 1257" style="list-style-type: none"> • range of symbols
Inserts	Description				
<ul data-bbox="829 1190 984 1222" style="list-style-type: none"> • symbols 	<ul data-bbox="1127 1190 1422 1257" style="list-style-type: none"> • range of symbols 				
DE1008E	<ul data-bbox="821 1360 1422 1430" style="list-style-type: none"> • The parser has failed to match a set of symbols [\${symbols}] <table border="1" data-bbox="821 1467 1422 1614"> <thead> <tr> <th data-bbox="821 1467 1118 1524">Inserts</th> <th data-bbox="1118 1467 1422 1524">Description</th> </tr> </thead> <tbody> <tr> <td data-bbox="821 1524 1118 1614"> <ul data-bbox="829 1572 984 1604" style="list-style-type: none"> • symbols </td> <td data-bbox="1118 1524 1422 1614"> <ul data-bbox="1127 1572 1406 1604" style="list-style-type: none"> • set of symbols </td> </tr> </tbody> </table>	Inserts	Description	<ul data-bbox="829 1572 984 1604" style="list-style-type: none"> • symbols 	<ul data-bbox="1127 1572 1406 1604" style="list-style-type: none"> • set of symbols
Inserts	Description				
<ul data-bbox="829 1572 984 1604" style="list-style-type: none"> • symbols 	<ul data-bbox="1127 1572 1406 1604" style="list-style-type: none"> • set of symbols 				
DE1009E	<ul data-bbox="821 1703 1422 1808" style="list-style-type: none"> • The parser has failed to match the inverse of a set of symbols [\${symbols}] 				

Code	Message				
	<table border="1"> <thead> <tr> <th data-bbox="816 285 1117 342">Inserts</th> <th data-bbox="1117 285 1414 342">Description</th> </tr> </thead> <tbody> <tr> <td data-bbox="816 342 1117 436">• symbols</td> <td data-bbox="1117 342 1414 436">• set of symbols</td> </tr> </tbody> </table>	Inserts	Description	• symbols	• set of symbols
Inserts	Description				
• symbols	• set of symbols				
DE1025W	<ul style="list-style-type: none"> Unknown warning exception received, unable to track non-Antlr exceptions [\${exceptions}] <table border="1"> <thead> <tr> <th data-bbox="816 705 1117 762">Inserts</th> <th data-bbox="1117 705 1414 762">Description</th> </tr> </thead> <tbody> <tr> <td data-bbox="816 762 1117 856">• exceptions</td> <td data-bbox="1117 762 1414 856">• exceptions</td> </tr> </tbody> </table>	Inserts	Description	• exceptions	• exceptions
Inserts	Description				
• exceptions	• exceptions				
DE1026W	<ul style="list-style-type: none"> There has been an unknown recognition warning exception with the Parser, it will attempt to continue [\${exception}] <table border="1"> <thead> <tr> <th data-bbox="816 1125 1117 1182">Inserts</th> <th data-bbox="1117 1125 1414 1182">Description</th> </tr> </thead> <tbody> <tr> <td data-bbox="816 1182 1117 1276">• exception</td> <td data-bbox="1117 1182 1414 1276">• exception</td> </tr> </tbody> </table>	Inserts	Description	• exception	• exception
Inserts	Description				
• exception	• exception				
DE1027W	<ul style="list-style-type: none"> The parser could not find an expected symbol at the given input position [\${position}] <table border="1"> <thead> <tr> <th data-bbox="816 1503 1117 1560">Inserts</th> <th data-bbox="1117 1503 1414 1560">Description</th> </tr> </thead> <tbody> <tr> <td data-bbox="816 1560 1117 1654">• position</td> <td data-bbox="1117 1560 1414 1654">• position</td> </tr> </tbody> </table>	Inserts	Description	• position	• position
Inserts	Description				
• position	• position				
DE1028W	<ul style="list-style-type: none"> The parser could not find a node with the expected token type [\${type}] 				

Code	Message				
	<table border="1"> <thead> <tr> <th data-bbox="820 289 1117 346">Inserts</th> <th data-bbox="1117 289 1414 346">Description</th> </tr> </thead> <tbody> <tr> <td data-bbox="820 346 1117 436"> <ul style="list-style-type: none"> • type </td> <td data-bbox="1117 346 1414 436"> <ul style="list-style-type: none"> • token type </td> </tr> </tbody> </table>	Inserts	Description	<ul style="list-style-type: none"> • type 	<ul style="list-style-type: none"> • token type
Inserts	Description				
<ul style="list-style-type: none"> • type 	<ul style="list-style-type: none"> • token type 				
DE1029W	<ul style="list-style-type: none"> • At this decision point the parser's look-ahead could not find a viable option [\${option}] <table border="1"> <thead> <tr> <th data-bbox="820 667 1117 724">Inserts</th> <th data-bbox="1117 667 1414 724">Description</th> </tr> </thead> <tbody> <tr> <td data-bbox="820 724 1117 814"> <ul style="list-style-type: none"> • option </td> <td data-bbox="1117 724 1414 814"> <ul style="list-style-type: none"> • option </td> </tr> </tbody> </table>	Inserts	Description	<ul style="list-style-type: none"> • option 	<ul style="list-style-type: none"> • option
Inserts	Description				
<ul style="list-style-type: none"> • option 	<ul style="list-style-type: none"> • option 				
DE1030W	<ul style="list-style-type: none"> • The parser could not match a required sub rule [\${sub_rule}] <table border="1"> <thead> <tr> <th data-bbox="820 1014 1117 1071">Inserts</th> <th data-bbox="1117 1014 1414 1071">Description</th> </tr> </thead> <tbody> <tr> <td data-bbox="820 1071 1117 1161"> <ul style="list-style-type: none"> • sub_rule </td> <td data-bbox="1117 1071 1414 1161"> <ul style="list-style-type: none"> • sub rule </td> </tr> </tbody> </table>	Inserts	Description	<ul style="list-style-type: none"> • sub_rule 	<ul style="list-style-type: none"> • sub rule
Inserts	Description				
<ul style="list-style-type: none"> • sub_rule 	<ul style="list-style-type: none"> • sub rule 				
DE1031W	<ul style="list-style-type: none"> • The parser has evaluated a validating semantic to false [\${semantic}] <table border="1"> <thead> <tr> <th data-bbox="820 1392 1117 1449">Inserts</th> <th data-bbox="1117 1392 1414 1449">Description</th> </tr> </thead> <tbody> <tr> <td data-bbox="820 1449 1117 1539"> <ul style="list-style-type: none"> • semantic </td> <td data-bbox="1117 1449 1414 1539"> <ul style="list-style-type: none"> • semantic </td> </tr> </tbody> </table>	Inserts	Description	<ul style="list-style-type: none"> • semantic 	<ul style="list-style-type: none"> • semantic
Inserts	Description				
<ul style="list-style-type: none"> • semantic 	<ul style="list-style-type: none"> • semantic 				
DE1032W	<ul style="list-style-type: none"> • The parser has failed to match a range of symbols [\${symbols}] <table border="1"> <thead> <tr> <th data-bbox="820 1738 1117 1795">Inserts</th> <th data-bbox="1117 1738 1414 1795">Description</th> </tr> </thead> <tbody> <tr> <td data-bbox="820 1795 1117 1927"> <ul style="list-style-type: none"> • symbols </td> <td data-bbox="1117 1795 1414 1927"> <ul style="list-style-type: none"> • range of symbols </td> </tr> </tbody> </table>	Inserts	Description	<ul style="list-style-type: none"> • symbols 	<ul style="list-style-type: none"> • range of symbols
Inserts	Description				
<ul style="list-style-type: none"> • symbols 	<ul style="list-style-type: none"> • range of symbols 				

Code	Message				
	<table border="1"> <thead> <tr> <th data-bbox="816 285 1118 342">Inserts</th> <th data-bbox="1118 285 1417 342">Description</th> </tr> </thead> <tbody> <tr> <td data-bbox="816 342 1118 365"></td> <td data-bbox="1118 342 1417 365"></td> </tr> </tbody> </table>	Inserts	Description		
Inserts	Description				
DE1033W	<ul style="list-style-type: none"> The parser has failed to match a set of symbols [\${symbols}] <table border="1"> <thead> <tr> <th data-bbox="816 558 1118 615">Inserts</th> <th data-bbox="1118 558 1417 615">Description</th> </tr> </thead> <tbody> <tr> <td data-bbox="816 615 1118 709">• symbols</td> <td data-bbox="1118 615 1417 709">• set of symbols</td> </tr> </tbody> </table>	Inserts	Description	• symbols	• set of symbols
Inserts	Description				
• symbols	• set of symbols				
DE1034W	<ul style="list-style-type: none"> The parser has failed to match the inverse of a set of symbols [\${symbols}] <table border="1"> <thead> <tr> <th data-bbox="816 938 1118 995">Inserts</th> <th data-bbox="1118 938 1417 995">Description</th> </tr> </thead> <tbody> <tr> <td data-bbox="816 995 1118 1089">• symbols</td> <td data-bbox="1118 995 1417 1089">• set of symbols</td> </tr> </tbody> </table>	Inserts	Description	• symbols	• set of symbols
Inserts	Description				
• symbols	• set of symbols				
DE1050I	<ul style="list-style-type: none"> Unknown info exception received, unable to track non-Antlr exceptions [\${symbols}] <table border="1"> <thead> <tr> <th data-bbox="816 1318 1118 1375">Inserts</th> <th data-bbox="1118 1318 1417 1375">Description</th> </tr> </thead> <tbody> <tr> <td data-bbox="816 1375 1118 1509">• symbols</td> <td data-bbox="1118 1375 1417 1509">• range of symbols</td> </tr> </tbody> </table>	Inserts	Description	• symbols	• range of symbols
Inserts	Description				
• symbols	• range of symbols				
DE1051I	<ul style="list-style-type: none"> There has been an unknown recognition info exception with the Parser, it will attempt to continue [\${exception}] <table border="1"> <thead> <tr> <th data-bbox="816 1778 1118 1835">Inserts</th> <th data-bbox="1118 1778 1417 1835">Description</th> </tr> </thead> <tbody> <tr> <td data-bbox="816 1835 1118 1929">• exception</td> <td data-bbox="1118 1835 1417 1929">• exception</td> </tr> </tbody> </table>	Inserts	Description	• exception	• exception
Inserts	Description				
• exception	• exception				

Code	Message				
	<table border="1"> <thead> <tr> <th data-bbox="818 285 1118 342">Inserts</th> <th data-bbox="1118 285 1414 342">Description</th> </tr> </thead> <tbody> <tr> <td data-bbox="818 342 1118 365"></td> <td data-bbox="1118 342 1414 365"></td> </tr> </tbody> </table>	Inserts	Description		
Inserts	Description				
DE1052I	<ul style="list-style-type: none"> The parser could not find an expected symbol at the given input position [\${position}] <table border="1"> <thead> <tr> <th data-bbox="818 596 1118 653">Inserts</th> <th data-bbox="1118 596 1414 653">Description</th> </tr> </thead> <tbody> <tr> <td data-bbox="818 653 1118 743"> <ul style="list-style-type: none"> position </td> <td data-bbox="1118 653 1414 743"> <ul style="list-style-type: none"> position </td> </tr> </tbody> </table>	Inserts	Description	<ul style="list-style-type: none"> position 	<ul style="list-style-type: none"> position
Inserts	Description				
<ul style="list-style-type: none"> position 	<ul style="list-style-type: none"> position 				
DE1053I	<ul style="list-style-type: none"> The parser could not find a node with the expected token type [\${type}] <table border="1"> <thead> <tr> <th data-bbox="818 978 1118 1035">Inserts</th> <th data-bbox="1118 978 1414 1035">Description</th> </tr> </thead> <tbody> <tr> <td data-bbox="818 1035 1118 1125"> <ul style="list-style-type: none"> type </td> <td data-bbox="1118 1035 1414 1125"> <ul style="list-style-type: none"> type </td> </tr> </tbody> </table>	Inserts	Description	<ul style="list-style-type: none"> type 	<ul style="list-style-type: none"> type
Inserts	Description				
<ul style="list-style-type: none"> type 	<ul style="list-style-type: none"> type 				
DE1054I	<ul style="list-style-type: none"> At this decision point the parser's look-ahead could not find a viable option [\${option}] <table border="1"> <thead> <tr> <th data-bbox="818 1358 1118 1415">Inserts</th> <th data-bbox="1118 1358 1414 1415">Description</th> </tr> </thead> <tbody> <tr> <td data-bbox="818 1415 1118 1505"> <ul style="list-style-type: none"> option </td> <td data-bbox="1118 1415 1414 1505"> <ul style="list-style-type: none"> option </td> </tr> </tbody> </table>	Inserts	Description	<ul style="list-style-type: none"> option 	<ul style="list-style-type: none"> option
Inserts	Description				
<ul style="list-style-type: none"> option 	<ul style="list-style-type: none"> option 				
DE1055I	<ul style="list-style-type: none"> The parser could not match a required sub rule [\${sub_rule}] <table border="1"> <thead> <tr> <th data-bbox="818 1703 1118 1759">Inserts</th> <th data-bbox="1118 1703 1414 1759">Description</th> </tr> </thead> <tbody> <tr> <td data-bbox="818 1759 1118 1850"> <ul style="list-style-type: none"> sub_rule </td> <td data-bbox="1118 1759 1414 1850"> <ul style="list-style-type: none"> sub rule </td> </tr> </tbody> </table>	Inserts	Description	<ul style="list-style-type: none"> sub_rule 	<ul style="list-style-type: none"> sub rule
Inserts	Description				
<ul style="list-style-type: none"> sub_rule 	<ul style="list-style-type: none"> sub rule 				

Code	Message				
DE1056I	<ul style="list-style-type: none"> The parser has evaluated a validating semantic to false [\${semantic}] <table border="1" data-bbox="821 457 1414 611"> <thead> <tr> <th data-bbox="821 457 1118 514">Inserts</th> <th data-bbox="1118 457 1414 514">Description</th> </tr> </thead> <tbody> <tr> <td data-bbox="821 514 1118 611">• semantic</td> <td data-bbox="1118 514 1414 611">• semantic</td> </tr> </tbody> </table>	Inserts	Description	• semantic	• semantic
Inserts	Description				
• semantic	• semantic				
DE1057I	<ul style="list-style-type: none"> The parser has failed to match a range of symbols [\${symbols}] <table border="1" data-bbox="821 800 1414 989"> <thead> <tr> <th data-bbox="821 800 1118 856">Inserts</th> <th data-bbox="1118 800 1414 856">Description</th> </tr> </thead> <tbody> <tr> <td data-bbox="821 856 1118 989">• symbols</td> <td data-bbox="1118 856 1414 989">• range of symbols</td> </tr> </tbody> </table>	Inserts	Description	• symbols	• range of symbols
Inserts	Description				
• symbols	• range of symbols				
DE1058I	<ul style="list-style-type: none"> The parser has failed to match a set of symbols [\${symbols}] <table border="1" data-bbox="821 1184 1414 1337"> <thead> <tr> <th data-bbox="821 1184 1118 1241">Inserts</th> <th data-bbox="1118 1184 1414 1241">Description</th> </tr> </thead> <tbody> <tr> <td data-bbox="821 1241 1118 1337">• symbols</td> <td data-bbox="1118 1241 1414 1337">• set of symbols</td> </tr> </tbody> </table>	Inserts	Description	• symbols	• set of symbols
Inserts	Description				
• symbols	• set of symbols				
DE1059I	<ul style="list-style-type: none"> The parser has failed to match the inverse of a set of symbols [\${symbols}] <table border="1" data-bbox="821 1568 1414 1719"> <thead> <tr> <th data-bbox="821 1568 1118 1625">Inserts</th> <th data-bbox="1118 1568 1414 1625">Description</th> </tr> </thead> <tbody> <tr> <td data-bbox="821 1625 1118 1719">• symbols</td> <td data-bbox="1118 1625 1414 1719">• set of symbols</td> </tr> </tbody> </table>	Inserts	Description	• symbols	• set of symbols
Inserts	Description				
• symbols	• set of symbols				
DE1085E	<ul style="list-style-type: none"> There has been an error that can't be identified by any part of the system [\${error}] 				

Code	Message	
	Inserts	Description
	<ul style="list-style-type: none"> error 	<ul style="list-style-type: none"> unidentified error

FFDC Log Codes

Table 9.5. FFDC Log Codes

Code	Message	
FF0000E	<ul style="list-style-type: none"> Failed to locate dump directory "\${directory}" 	
	Inserts	Description
	<ul style="list-style-type: none"> directory 	<ul style="list-style-type: none"> dump file directory
FF0001I	<ul style="list-style-type: none"> Using dump directory "\${directory}" 	
	Inserts	Description
	<ul style="list-style-type: none"> directory 	<ul style="list-style-type: none"> dump file directory
FF0002I	<ul style="list-style-type: none"> Wrote dump file "\${file}" 	
	Inserts	Description
	<ul style="list-style-type: none"> file 	<ul style="list-style-type: none"> dump file name
FF0003E		

Code	Message						
	<ul style="list-style-type: none"> Bundle '<code>{bundle}</code>' in Subsystem '<code>{subsystem}</code>' failed to start. <table border="1"> <thead> <tr> <th>Inserts</th> <th>Description</th> </tr> </thead> <tbody> <tr> <td> <ul style="list-style-type: none"> bundle </td> <td> <ul style="list-style-type: none"> bundle name </td> </tr> <tr> <td> <ul style="list-style-type: none"> subsystem </td> <td> <ul style="list-style-type: none"> subsystem name </td> </tr> </tbody> </table>	Inserts	Description	<ul style="list-style-type: none"> bundle 	<ul style="list-style-type: none"> bundle name 	<ul style="list-style-type: none"> subsystem 	<ul style="list-style-type: none"> subsystem name
Inserts	Description						
<ul style="list-style-type: none"> bundle 	<ul style="list-style-type: none"> bundle name 						
<ul style="list-style-type: none"> subsystem 	<ul style="list-style-type: none"> subsystem name 						

Bootstrap Log Codes

Table 9.6. Bootstrap Log Codes

Code	Message
KB0001I	<ul style="list-style-type: none"> Server starting.
KB0002E	<ul style="list-style-type: none"> Start failed:

Kernel Log Codes

Table 9.7. Kernel Log Codes

Code	Message				
KE0000I	<ul style="list-style-type: none"> Boot subsystems installed. 				
KE0001I	<ul style="list-style-type: none"> Base subsystems installed. 				
KE0051E	<ul style="list-style-type: none"> Subsystem descriptor has a bundle element '<code>{element}</code>' with no bundle symbolic name. <table border="1"> <thead> <tr> <th>Inserts</th> <th>Description</th> </tr> </thead> <tbody> <tr> <td> <ul style="list-style-type: none"> element </td> <td> <ul style="list-style-type: none"> bundle element </td> </tr> </tbody> </table>	Inserts	Description	<ul style="list-style-type: none"> element 	<ul style="list-style-type: none"> bundle element
Inserts	Description				
<ul style="list-style-type: none"> element 	<ul style="list-style-type: none"> bundle element 				

Code	Message	
	Inserts	Description

OSGi Log Codes

Table 9.8. OSGi Log Codes

Code	Message	
OP0001W	<ul style="list-style-type: none"> The library definition <code>'\${definition}'</code> could not be provisioned. A library definition with the name <code>'\${definition}'</code> and version <code>'\${version}'</code> has already been added to the repository from <code>'\${location}'</code>. 	
	Inserts <ul style="list-style-type: none"> definition version location 	Description <ul style="list-style-type: none"> library definition library version library location
OP0002W	<ul style="list-style-type: none"> The bundle <code>'\${bundle}'</code> could not be provisioned. A bundle with the symbolic name <code>'\${name}'</code> and version <code>'\${version}'</code> has already been added to the repository from <code>'\${location}'</code>. 	
	Inserts 	Description

Code	Message				
	<table border="1"> <thead> <tr> <th data-bbox="816 289 1117 346">Inserts</th> <th data-bbox="1117 289 1414 346">Description</th> </tr> </thead> <tbody> <tr> <td data-bbox="816 346 1117 751"> <ul style="list-style-type: none"> • bundle • name • version • location </td> <td data-bbox="1117 346 1414 751"> <ul style="list-style-type: none"> • bundle name • bundle symbolic name • bundle version • bundle location </td> </tr> </tbody> </table>	Inserts	Description	<ul style="list-style-type: none"> • bundle • name • version • location 	<ul style="list-style-type: none"> • bundle name • bundle symbolic name • bundle version • bundle location
Inserts	Description				
<ul style="list-style-type: none"> • bundle • name • version • location 	<ul style="list-style-type: none"> • bundle name • bundle symbolic name • bundle version • bundle location 				
OP0003W	<ul style="list-style-type: none"> • The JAR bundle '<code>\${bundle}</code>' could not be provisioned as it appears to be corrupted. The exception encountered whilst reading the file was: <table border="1"> <thead> <tr> <th data-bbox="816 1039 1117 1096">Inserts</th> <th data-bbox="1117 1039 1414 1096">Description</th> </tr> </thead> <tbody> <tr> <td data-bbox="816 1096 1117 1192"> <ul style="list-style-type: none"> • bundle </td> <td data-bbox="1117 1096 1414 1192"> <ul style="list-style-type: none"> • bundle name </td> </tr> </tbody> </table>	Inserts	Description	<ul style="list-style-type: none"> • bundle 	<ul style="list-style-type: none"> • bundle name
Inserts	Description				
<ul style="list-style-type: none"> • bundle 	<ul style="list-style-type: none"> • bundle name 				
OP0004W	<ul style="list-style-type: none"> • The bundle '<code>\${bundle}</code>' could not be provisioned as its manifest is malformed. The error encountered whilst parsing the manifest was: <code>\${error}</code> <table border="1"> <thead> <tr> <th data-bbox="816 1495 1117 1551">Inserts</th> <th data-bbox="1117 1495 1414 1551">Description</th> </tr> </thead> <tbody> <tr> <td data-bbox="816 1551 1117 1717"> <ul style="list-style-type: none"> • bundle • error </td> <td data-bbox="1117 1551 1414 1717"> <ul style="list-style-type: none"> • bundle name • error </td> </tr> </tbody> </table>	Inserts	Description	<ul style="list-style-type: none"> • bundle • error 	<ul style="list-style-type: none"> • bundle name • error
Inserts	Description				
<ul style="list-style-type: none"> • bundle • error 	<ul style="list-style-type: none"> • bundle name • error 				

Profile Log Codes

Table 9.9. Profile Log Codes

Code	Message						
PM0000I	<ul style="list-style-type: none"> • Installing profile '\${profile}'. <table border="1" data-bbox="821 447 1419 600"> <thead> <tr> <th data-bbox="821 447 1122 506">Inserts</th> <th data-bbox="1122 447 1419 506">Description</th> </tr> </thead> <tbody> <tr> <td data-bbox="821 506 1122 600">• profile</td> <td data-bbox="1122 506 1419 600">• profile name</td> </tr> </tbody> </table>	Inserts	Description	• profile	• profile name		
Inserts	Description						
• profile	• profile name						
PM0001I	<ul style="list-style-type: none"> • Installed profile '\${profile}'. <table border="1" data-bbox="821 753 1419 907"> <thead> <tr> <th data-bbox="821 753 1122 812">Inserts</th> <th data-bbox="1122 753 1419 812">Description</th> </tr> </thead> <tbody> <tr> <td data-bbox="821 812 1122 907">• profile</td> <td data-bbox="1122 812 1419 907">• profile name</td> </tr> </tbody> </table>	Inserts	Description	• profile	• profile name		
Inserts	Description						
• profile	• profile name						
PM0002I	<ul style="list-style-type: none"> • Server open for business with profile '\${profile}'. <table border="1" data-bbox="821 1096 1419 1249"> <thead> <tr> <th data-bbox="821 1096 1122 1155">Inserts</th> <th data-bbox="1122 1096 1419 1155">Description</th> </tr> </thead> <tbody> <tr> <td data-bbox="821 1155 1122 1249">• profile</td> <td data-bbox="1122 1155 1419 1249">• profile name</td> </tr> </tbody> </table>	Inserts	Description	• profile	• profile name		
Inserts	Description						
• profile	• profile name						
PM0003E	<ul style="list-style-type: none"> • Timed out with profile '\${profile}' waiting for the application context of bundle '\${bundle}' to be created. <table border="1" data-bbox="821 1516 1419 1740"> <thead> <tr> <th data-bbox="821 1516 1122 1575">Inserts</th> <th data-bbox="1122 1516 1419 1575">Description</th> </tr> </thead> <tbody> <tr> <td data-bbox="821 1575 1122 1671">• profile</td> <td data-bbox="1122 1575 1419 1671">• profile name</td> </tr> <tr> <td data-bbox="821 1671 1122 1740">• bundle</td> <td data-bbox="1122 1671 1419 1740">• bundle name</td> </tr> </tbody> </table>	Inserts	Description	• profile	• profile name	• bundle	• bundle name
Inserts	Description						
• profile	• profile name						
• bundle	• bundle name						
PM0004W	<ul style="list-style-type: none"> • With profile '\${profile}', bundle '\${bundle}' has not 						

Code	Message				
	<p>started.</p> <table border="1"> <thead> <tr> <th>Inserts</th> <th>Description</th> </tr> </thead> <tbody> <tr> <td> <ul style="list-style-type: none"> • profile • bundle </td> <td> <ul style="list-style-type: none"> • profile name • bundle name </td> </tr> </tbody> </table>	Inserts	Description	<ul style="list-style-type: none"> • profile • bundle 	<ul style="list-style-type: none"> • profile name • bundle name
Inserts	Description				
<ul style="list-style-type: none"> • profile • bundle 	<ul style="list-style-type: none"> • profile name • bundle name 				

Servlet Log Codes

Table 9.10. Servlet Log Codes

Code	Message				
SC0000I	<ul style="list-style-type: none"> • Starting the ServletContainer on port \${port}. <table border="1"> <thead> <tr> <th>Inserts</th> <th>Description</th> </tr> </thead> <tbody> <tr> <td> <ul style="list-style-type: none"> • port </td> <td> <ul style="list-style-type: none"> • port </td> </tr> </tbody> </table>	Inserts	Description	<ul style="list-style-type: none"> • port 	<ul style="list-style-type: none"> • port
Inserts	Description				
<ul style="list-style-type: none"> • port 	<ul style="list-style-type: none"> • port 				
SC0001I	<ul style="list-style-type: none"> • Starting the ServletContainer on port \${port} and SSL port \${ssl}. <table border="1"> <thead> <tr> <th>Inserts</th> <th>Description</th> </tr> </thead> <tbody> <tr> <td> <ul style="list-style-type: none"> • port • ssl </td> <td> <ul style="list-style-type: none"> • port • ssl port </td> </tr> </tbody> </table>	Inserts	Description	<ul style="list-style-type: none"> • port • ssl 	<ul style="list-style-type: none"> • port • ssl port
Inserts	Description				
<ul style="list-style-type: none"> • port • ssl 	<ul style="list-style-type: none"> • port • ssl port 				
SC0002I	<ul style="list-style-type: none"> • Shutting down the ServletContainer. 				
SC0003E	<ul style="list-style-type: none"> • Failed to start the 				

Code	Message				
	ServletContainer.				
SC0004E	<ul style="list-style-type: none"> Failed to stop the ServletContainer. 				
SC1000I	<ul style="list-style-type: none"> Creating web application \${application}. <table border="1" data-bbox="820 621 1417 812"> <thead> <tr> <th data-bbox="820 621 1122 678">Inserts</th> <th data-bbox="1122 621 1417 678">Description</th> </tr> </thead> <tbody> <tr> <td data-bbox="820 678 1122 812"> <ul style="list-style-type: none"> application </td> <td data-bbox="1122 678 1417 812"> <ul style="list-style-type: none"> web application </td> </tr> </tbody> </table>	Inserts	Description	<ul style="list-style-type: none"> application 	<ul style="list-style-type: none"> web application
Inserts	Description				
<ul style="list-style-type: none"> application 	<ul style="list-style-type: none"> web application 				
SC1001I	<ul style="list-style-type: none"> Deploying web application \${application}. <table border="1" data-bbox="820 1003 1417 1194"> <thead> <tr> <th data-bbox="820 1003 1122 1060">Inserts</th> <th data-bbox="1122 1003 1417 1060">Description</th> </tr> </thead> <tbody> <tr> <td data-bbox="820 1060 1122 1194"> <ul style="list-style-type: none"> application </td> <td data-bbox="1122 1060 1417 1194"> <ul style="list-style-type: none"> web application </td> </tr> </tbody> </table>	Inserts	Description	<ul style="list-style-type: none"> application 	<ul style="list-style-type: none"> web application
Inserts	Description				
<ul style="list-style-type: none"> application 	<ul style="list-style-type: none"> web application 				
SC1002I	<ul style="list-style-type: none"> Removing web application \${application}. <table border="1" data-bbox="820 1383 1417 1575"> <thead> <tr> <th data-bbox="820 1383 1122 1440">Inserts</th> <th data-bbox="1122 1383 1417 1440">Description</th> </tr> </thead> <tbody> <tr> <td data-bbox="820 1440 1122 1575"> <ul style="list-style-type: none"> application </td> <td data-bbox="1122 1440 1417 1575"> <ul style="list-style-type: none"> web application </td> </tr> </tbody> </table>	Inserts	Description	<ul style="list-style-type: none"> application 	<ul style="list-style-type: none"> web application
Inserts	Description				
<ul style="list-style-type: none"> application 	<ul style="list-style-type: none"> web application 				
SC1003E	<ul style="list-style-type: none"> Failed to create web application \${application}. <table border="1" data-bbox="820 1766 1417 1915"> <thead> <tr> <th data-bbox="820 1766 1122 1822">Inserts</th> <th data-bbox="1122 1766 1417 1822">Description</th> </tr> </thead> <tbody> <tr> <td data-bbox="820 1822 1122 1915"> <ul style="list-style-type: none"> application </td> <td data-bbox="1122 1822 1417 1915"> <ul style="list-style-type: none"> web </td> </tr> </tbody> </table>	Inserts	Description	<ul style="list-style-type: none"> application 	<ul style="list-style-type: none"> web
Inserts	Description				
<ul style="list-style-type: none"> application 	<ul style="list-style-type: none"> web 				

Code	Message				
	<table border="1"> <thead> <tr> <th data-bbox="818 285 1118 342">Inserts</th> <th data-bbox="1120 285 1417 342">Description</th> </tr> </thead> <tbody> <tr> <td data-bbox="818 344 1118 436"></td> <td data-bbox="1120 344 1417 436">application</td> </tr> </tbody> </table>	Inserts	Description		application
Inserts	Description				
	application				
SC1004E	<ul style="list-style-type: none"> Failed to create web application <code>\${application}</code>: the associated web bundle <code>\ '\${bundle}'</code> failed to publish its <code>ApplicationContext</code> within <code>\${time}</code> seconds. <table border="1"> <thead> <tr> <th data-bbox="818 779 1118 835">Inserts</th> <th data-bbox="1120 779 1417 835">Description</th> </tr> </thead> <tbody> <tr> <td data-bbox="818 837 1118 1148"> <ul style="list-style-type: none"> application bundle time </td> <td data-bbox="1120 837 1417 1148"> <ul style="list-style-type: none"> web application web bundle time frame </td> </tr> </tbody> </table>	Inserts	Description	<ul style="list-style-type: none"> application bundle time 	<ul style="list-style-type: none"> web application web bundle time frame
Inserts	Description				
<ul style="list-style-type: none"> application bundle time 	<ul style="list-style-type: none"> web application web bundle time frame 				
SC2000E	<ul style="list-style-type: none"> Failed to deploy WAR <code>\${war}</code>. <table border="1"> <thead> <tr> <th data-bbox="818 1270 1118 1327">Inserts</th> <th data-bbox="1120 1270 1417 1327">Description</th> </tr> </thead> <tbody> <tr> <td data-bbox="818 1329 1118 1421"> <ul style="list-style-type: none"> war </td> <td data-bbox="1120 1329 1417 1421"> <ul style="list-style-type: none"> war file </td> </tr> </tbody> </table>	Inserts	Description	<ul style="list-style-type: none"> war 	<ul style="list-style-type: none"> war file
Inserts	Description				
<ul style="list-style-type: none"> war 	<ul style="list-style-type: none"> war file 				

Web Log Codes

Table 9.11. Web Log Codes

Code	Message
WE1000E	<ul style="list-style-type: none"> Failed to create web application context <code>[\${context}]</code>: the associated web <code>\ bundle</code>

Code	Message				
	<p data-bbox="850 289 1421 359">[<code>{bundle}</code>] failed to publish its <code>ApplicationContext</code>.</p> <table border="1" data-bbox="821 394 1421 695"> <thead> <tr> <th data-bbox="821 394 1122 451">Inserts</th> <th data-bbox="1122 394 1421 451">Description</th> </tr> </thead> <tbody> <tr> <td data-bbox="821 451 1122 695"> <ul style="list-style-type: none"> • context • bundle </td> <td data-bbox="1122 451 1421 695"> <ul style="list-style-type: none"> • web application context • web bundle </td> </tr> </tbody> </table>	Inserts	Description	<ul style="list-style-type: none"> • context • bundle 	<ul style="list-style-type: none"> • web application context • web bundle
Inserts	Description				
<ul style="list-style-type: none"> • context • bundle 	<ul style="list-style-type: none"> • web application context • web bundle 				
WE1001E	<ul style="list-style-type: none"> • Failed to create web application context [<code>{context}</code>]; the associated web \ bundle [<code>{bundle}</code>] failed to publish its <code>ApplicationContext</code> within \ <code>{time}</code> seconds. <table border="1" data-bbox="821 1039 1421 1409"> <thead> <tr> <th data-bbox="821 1039 1122 1096">Inserts</th> <th data-bbox="1122 1039 1421 1096">Description</th> </tr> </thead> <tbody> <tr> <td data-bbox="821 1096 1122 1409"> <ul style="list-style-type: none"> • context • bundle • time </td> <td data-bbox="1122 1096 1421 1409"> <ul style="list-style-type: none"> • web application context • web bundle • time frame </td> </tr> </tbody> </table>	Inserts	Description	<ul style="list-style-type: none"> • context • bundle • time 	<ul style="list-style-type: none"> • web application context • web bundle • time frame
Inserts	Description				
<ul style="list-style-type: none"> • context • bundle • time 	<ul style="list-style-type: none"> • web application context • web bundle • time frame 				

10. Further Reading

[SpringSource dm Server Programmer Guide](#)

[Spring Framework Reference Guide](#)

[Spring Dynamic Modules Reference Guide](#)